

This tutorial demonstrates how to edit a document interactively with the Acrobat Check-in/Check-out plug-in.

This way, the document stays part of the Asanti system, which limits the re-processing and processing time.

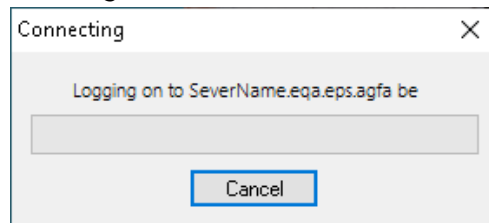
The Acrobat plug-ins are installed via the Asanti client installation wizard (only when Adobe Acrobat Pro is present).

Download the Asanti Sample Files via the Asanti Client, via Help > Asanti Online > Download Sample Files.

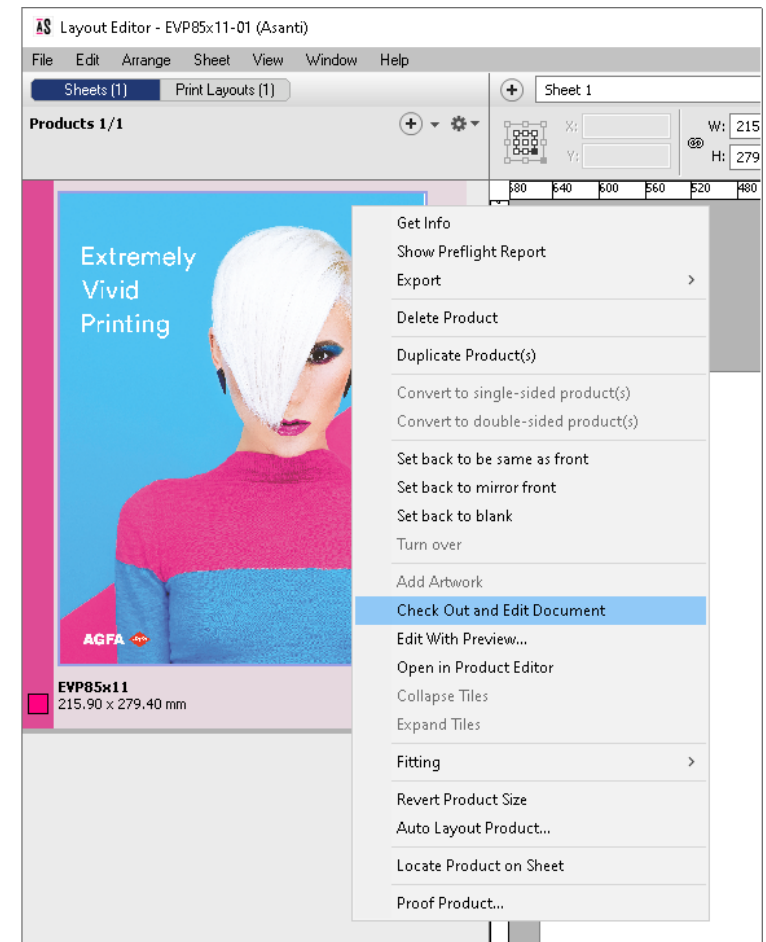
1. Change the dimensions

1. Create a New Wide Format Job.
2. Select an Anapurna M2500 printer.
3. Select as Media 650 x 500 mm.
4. Drop the file *EVP85x11.pdf* on the Image pane.
5. In the Image pane, context-click the image, and select **Check Out and Edit Document**.
6. Acrobat Pro opens automatically, and it jumps to the selected page.

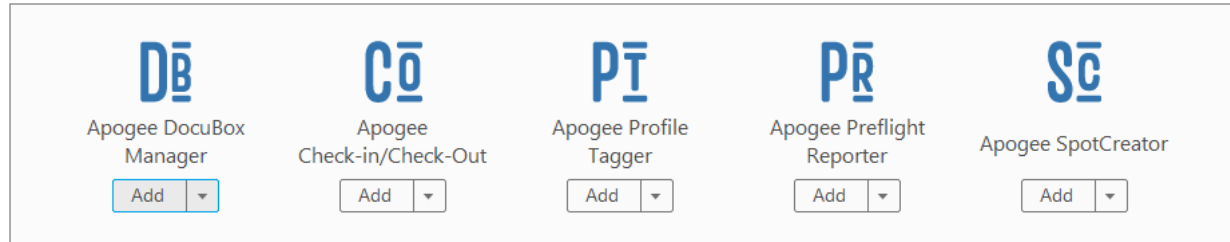
You might notice that a connection is made.



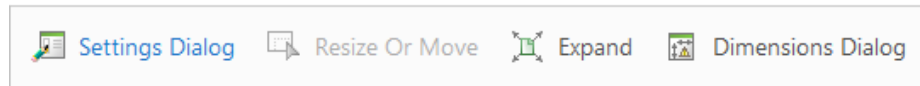
7. In Acrobat, open the Tools-tab, and select the Apogee DocuBox Manager plug-in.



8. Click “Add” to add a shortcut in the right Tool bar.



9. Open the Apogee DocuBox Manager, and select the **Settings Dialog**.

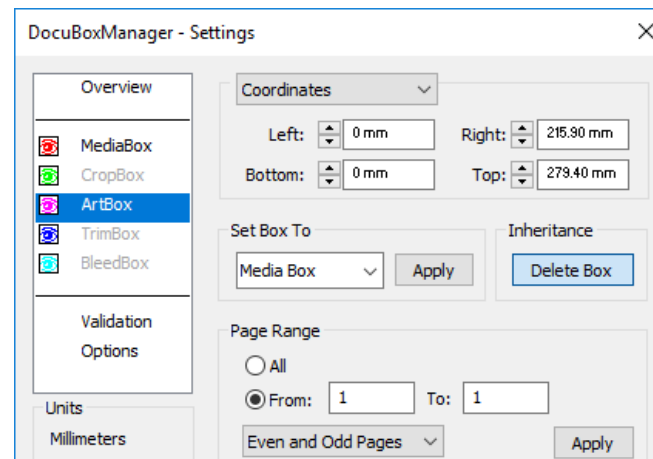
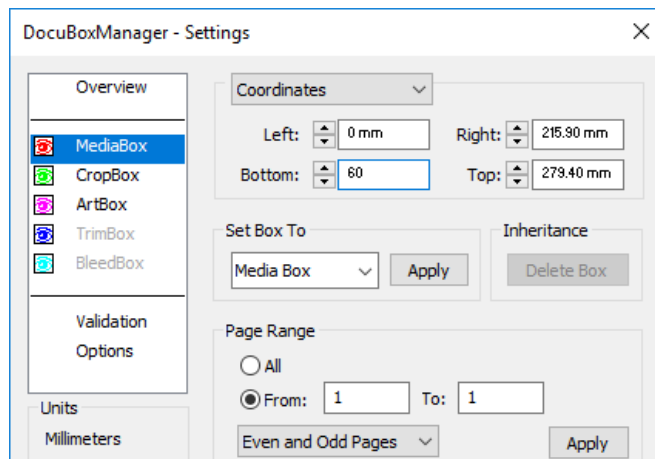


10. Select the **MediaBox** and select the **Coordinates**.

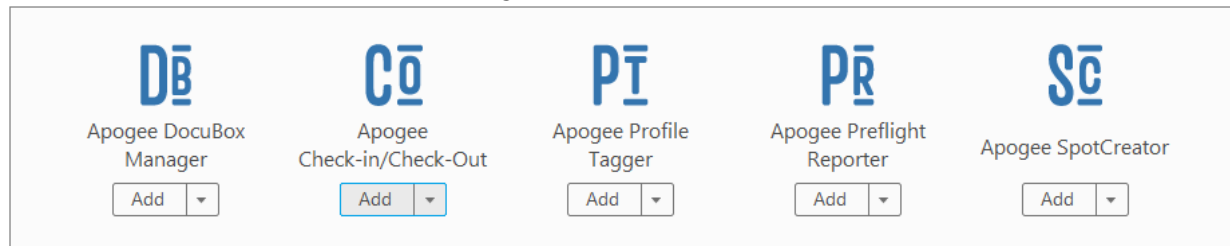
11. Change the Bottom value to 60 mm. (if needed, first change the units to Millimeters in the Acrobat Preferences)

12. Select the **CropBox**, and click **Delete Box**.

13. Select the **ArtBox**, and click **Delete Box**.



14. Open the Tools-tab, and select the Check-in/Check-Out plug-in.
Click “Add” to add a shortcut in the right Tool bar.

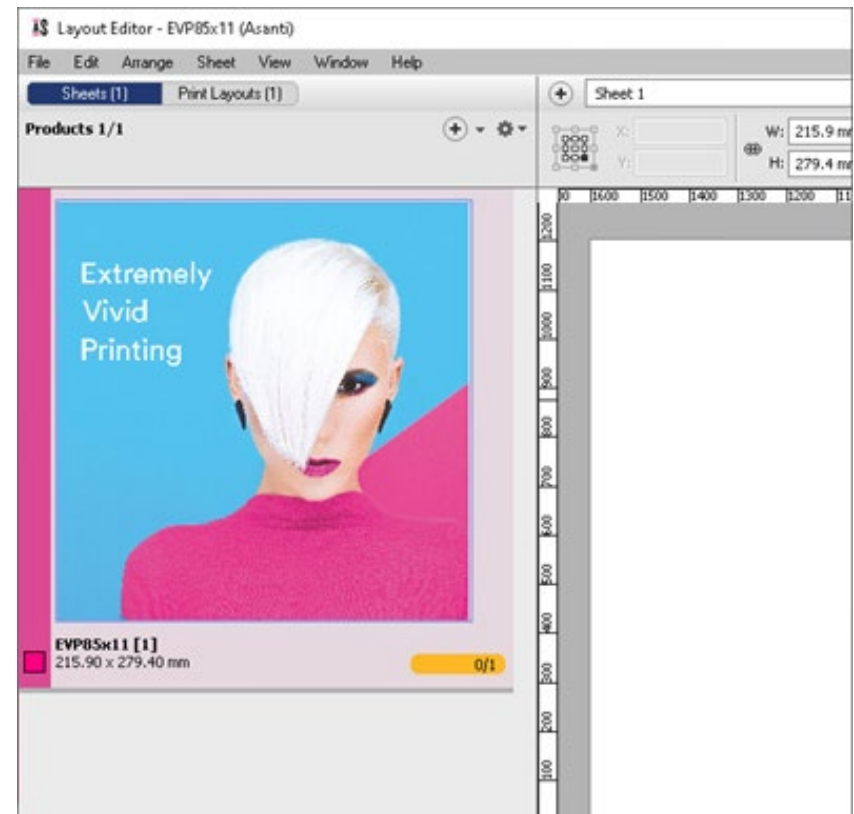
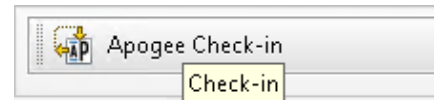


15. Open the Check-in/Check-Out plug-in

16. Click the “Apogee Check-in” button centered above.

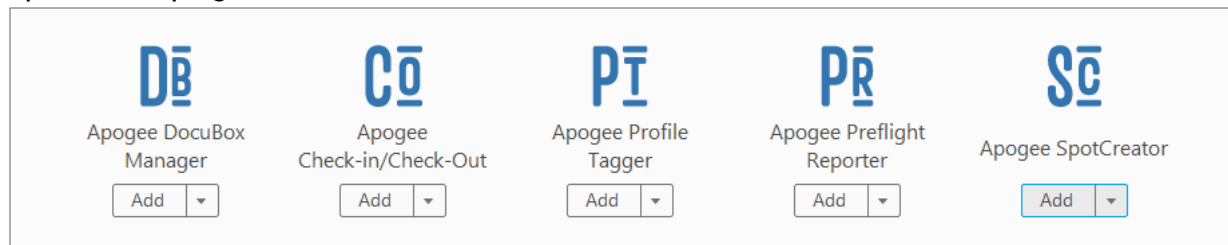
17. Click Save to apply the changes, and you will be guided back to the Asanti Layout Editor.


- In Asanti, the file will be updated.
- You will see that the MediaBox changes are applied.
- The file name will get an [1], to mark it as the first revision.



2. Add a White color

1. Create a **New Wide Format** job.
2. In the Job Set-up pane, select the **Anapurna M2500** printer.
3. Drop the *Agfa Flag.pdf* on the Images Pane.
4. Choose as Media **650 x 500 mm**.
5. Enable **White**.
6. Select **From Image** and **Pre-white (On White calibration)**.
7. Select a CMP that supports White Printing, e.g. **HighDens – 8P DS Bi 720x1440 – 6C**.
8. Click **Apply Changes**.
9. Context-click the image, and select **Check Out and Edit Document**.
10. In Acrobat Pro, open the Tools, and select the Apogee SpotCreator plug-in.




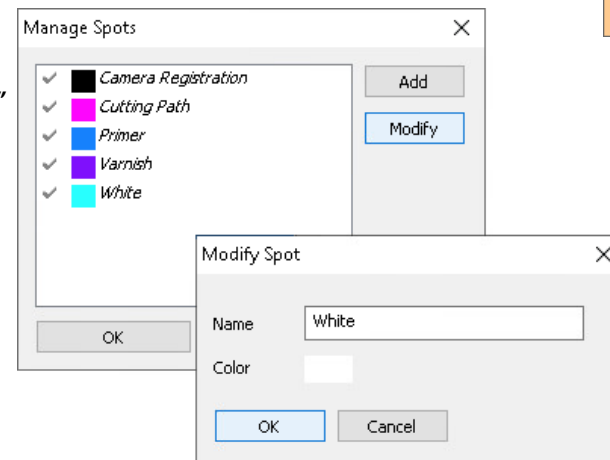
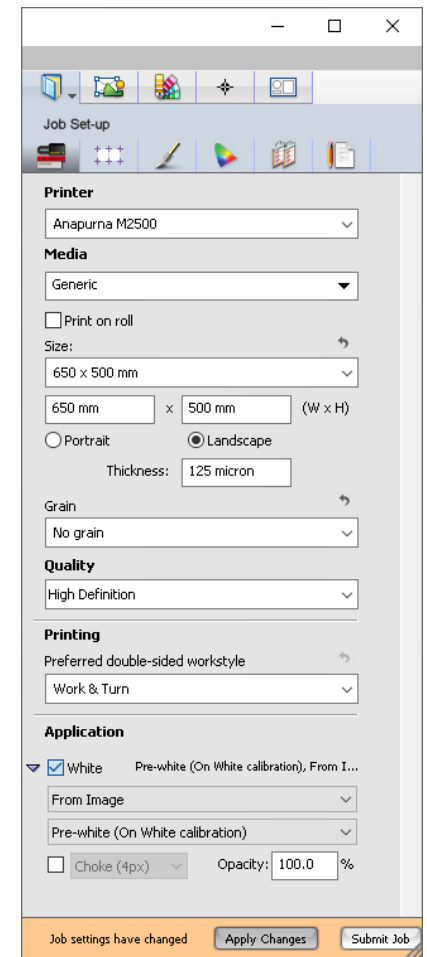
11. Click “Add” to add a shortcut in the right Tool bar.
12. Open SpotCreator, and select  **Manage Spots**
13. **Modify** a Spot.

Name: White

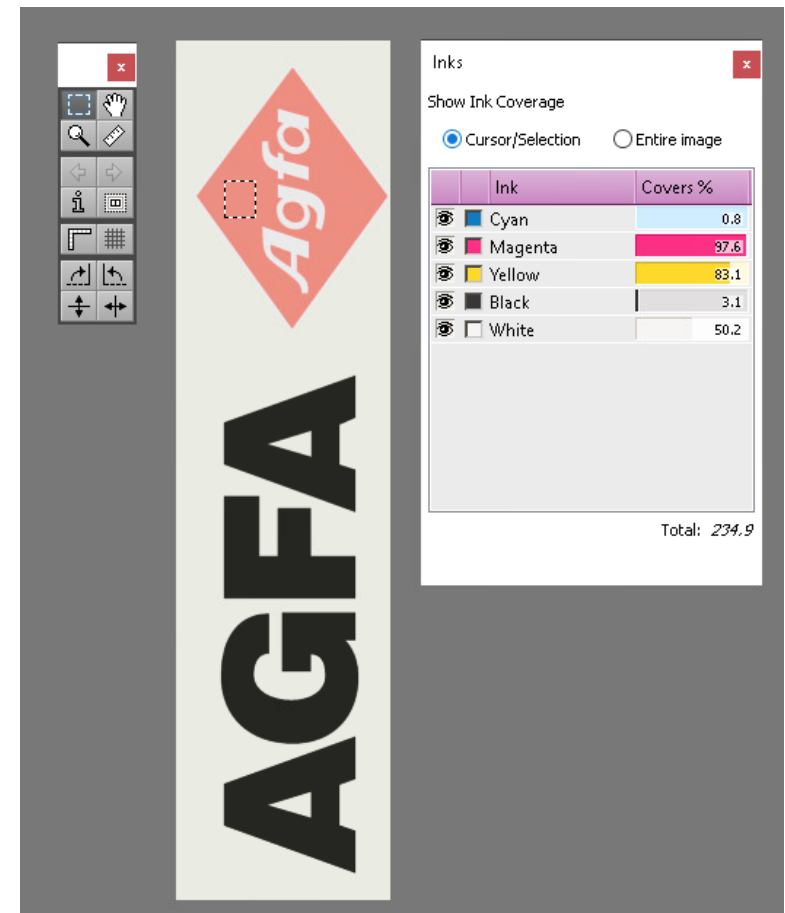
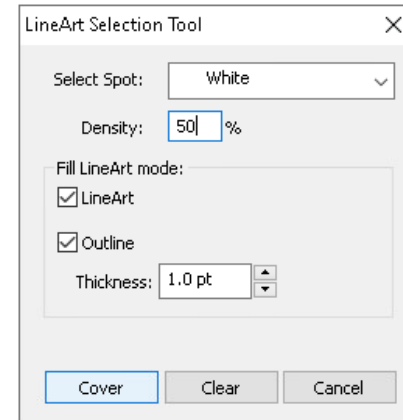
Color: click the cyan and select white from the “basic colors” list.

NOTE: the color that we select to represent white in Acrobat is not important for the printing process.

14. Click **OK**.
15. Now open  **LineArt Selection Tool**
16. Select the red rhombus of the Agfa-logo.

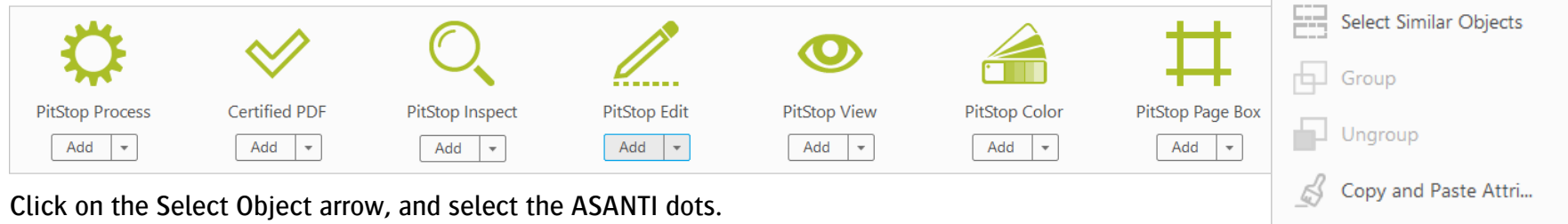


17. Select Spot: White
18. Select 50% as Density, and click on the **Cover**-button
19. In the right Tools-bar, click to open the Check-in/Check-Out plug-in.
20. Check-in the document like in the previous exercise.
21. Click **Save** to apply the changes and you will be guided back to the Asanti Layout Editor.
The file in the Images pane will be updated.
22. Context-click **Edit with Preview...**
23. Open the Ink Palette (Windows>Palettes>Show Inks), and select the Cursor/Selection ink coverage.
24. You will see the cover values for the white ink, when selecting an area in the red rhombus.
NOTE: the white color visualization in the Preview can be changed by clicking on the color rectangle in front of white in the Inks Palette.

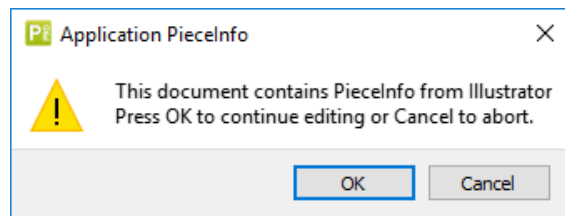


3. Edit the content of a page

1. Go to the Jobs section, and create a **New Wide Format Job**.
2. Select the **Anapurna M2500** as printer.
3. Choose as Media **650 x 500 mm**.
4. Drop the *Asanti-sticker-01.pdf* on the Images Pane.
5. After processing, Context-click and select **Check Out and Edit Document**.
6. In Acrobat, open Pitstop Edit.



7. Click on the **Select Object** arrow, and select the **ASANTI** dots. Delete them.
8. Click **OK** to remove the Illustrator PiecelInfo.



9. Check-in the document like in the previous exercise.
10. Click **Save** to apply the changed and you will be guided back to the Asanti Layout Editor.
11. The changed will be applied.
12. Click **Submit Job** and delete it.

4. Remarks

- Check-in/Check-Out is only possible when the input file is a PDF or Ai format. EPS files and the supported bitmap files can't be edited via this plug-in.