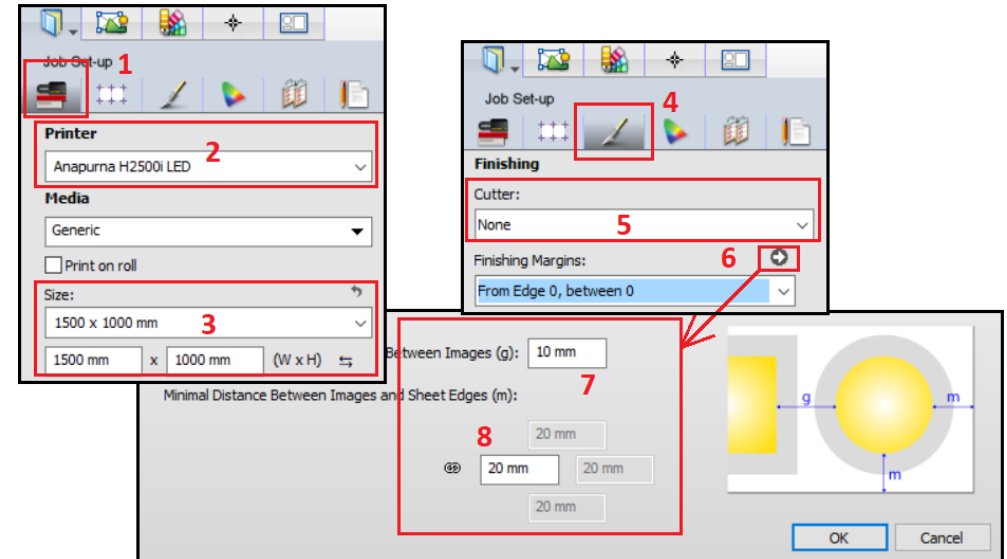


This tutorial demonstrates how to manually position products in the Asanti Layout Editor.
Download the Asanti Sample Files via the Asanti Client (Help >Asanti Online > Download Sample Files).

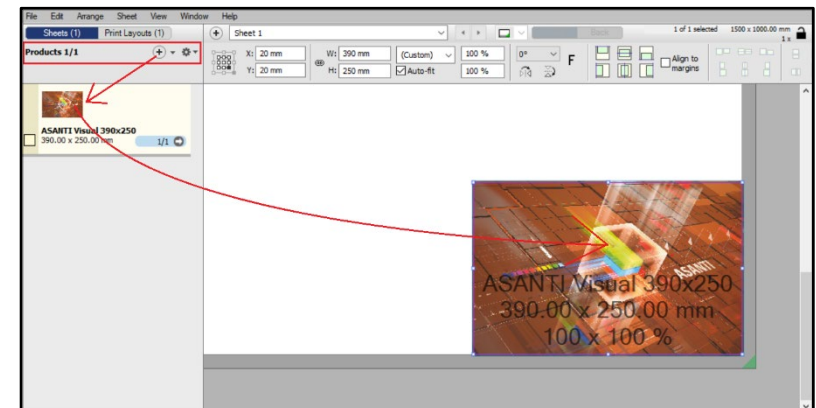
1. Create a new job

1. File > New Wide Format Job.
2. In Job Set-up inspector (1) select a Printing Device (2).
3. Select a Size e.g. "1500 x 1000 mm" (3).
4. Open the Finishing inspector (4).
5. Select Cutter "None" (5).
6. Click the arrow next to the "Finishing Margins" title (6).
7. Set "Minimal Distance Between Images" to 10 mm (7).
8. Set "Minimal Distance Between Images and sheet Edges" to 20 mm (8).
9. Click OK.
10. Click on the eye icon to open the View Options palette and verify if Sheet "Lay", Sheet "Margins" and Image "Bleed zone" are selected.

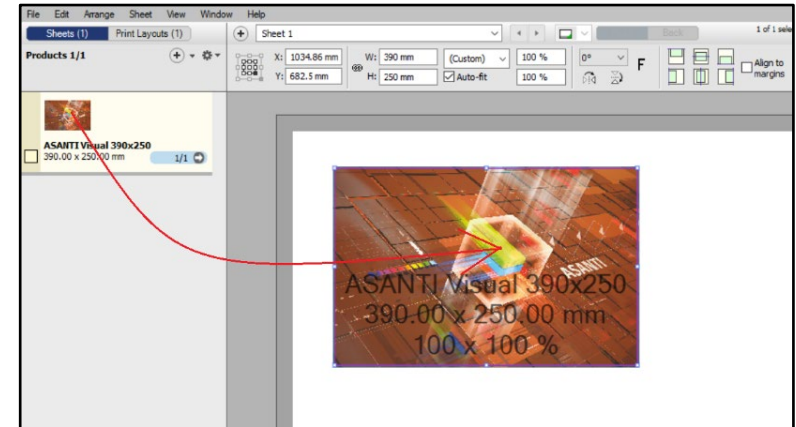


2. Place a product

1. In the Products pane click "+", browse for "ASANTI Visual 390x250.pdf" and click Open.
2. Drag and drop the product from the Products pane to the Sheet. For our selected Anapurna device, the Sheet lay is the lower right corner. The product is automatically placed in this corner with respect to the "Finishing Margins" (for other devices the Sheet lay can be the lower left corner e.g. Jeti).



3. Delete the product and drag it again but now press SHIFT when you release the mouse button to place the product where you drop it.

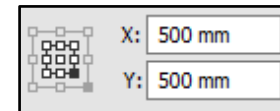


3. Using the Positioning Toolbar

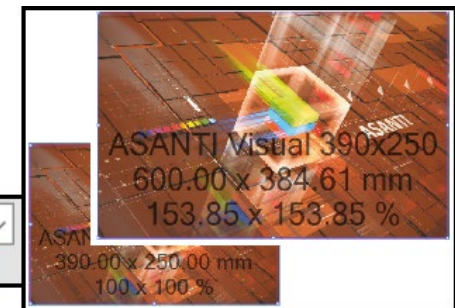
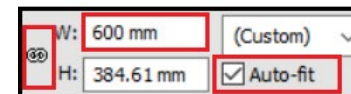
1. You can hide the Inspector Pane (CTRL+Shift+I) when the complete Positioning Toolbar is not visible.



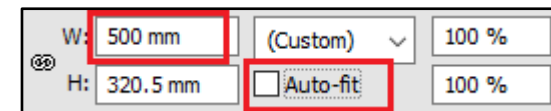
2. The Position group shows the Sheet Lay position (gray square) and product reference corner (black square) with its coordinates from the Sheet Lay. Change the coordinates and notice how the product moves on the sheet.




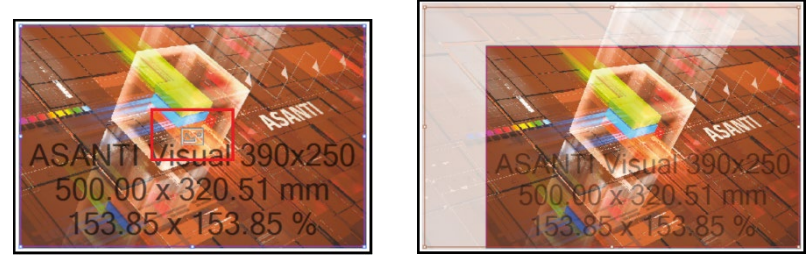
3. In the Size group make sure that the chain icon is not broken and that the Auto-fit checkbox is selected. Then change the width to 600 mm to scale the frame and product proportionally.



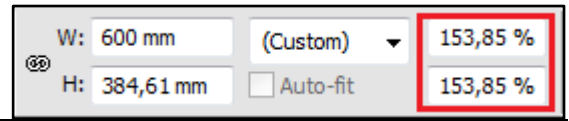
4. Disable the Auto-fit option and change the width to 500 mm to only scale the frame but not the product.



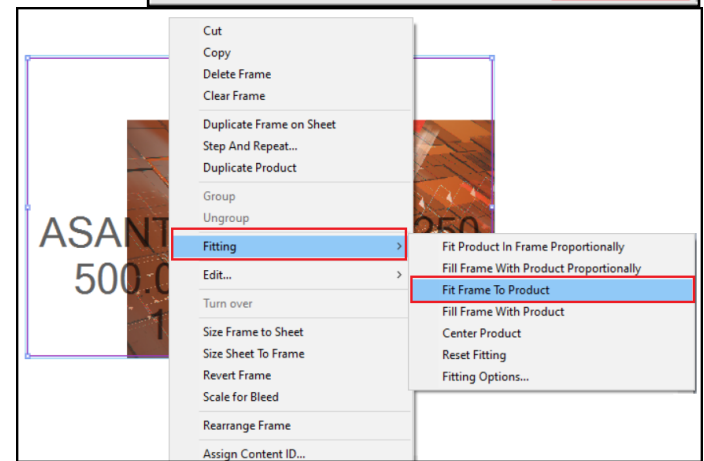
- To verify this, move the cursor over the product and click on the  icon. The product is now selected which is indicated by the brown border and handles.
 - The frame has a blue border and handles. The frame shows what will be printed.



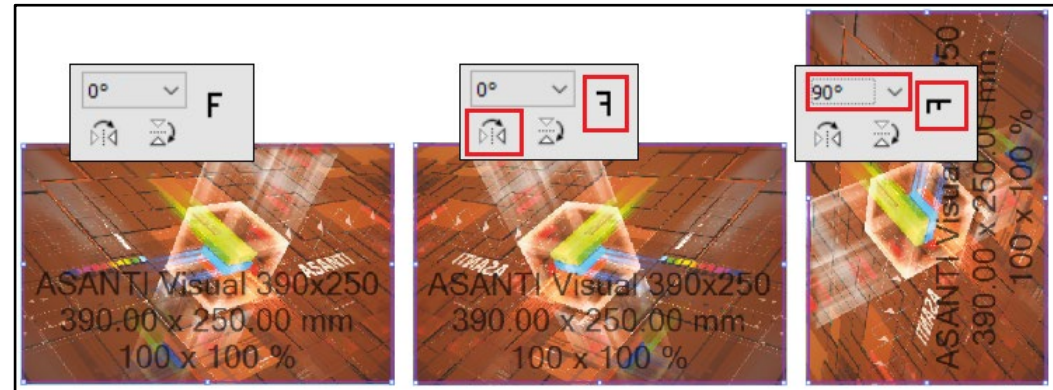
- Notice the product scale factor in the positioning toolbar. Change it to 100 % to reset the original product size.



- Click somewhere in the blank area between the product and the frame to select the frame.
- Context click on the product frame and select Fitting > Fit Frame To Product.

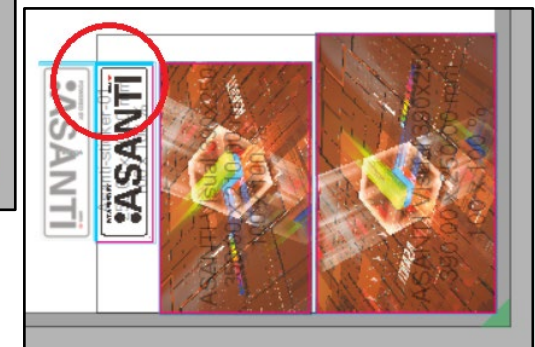
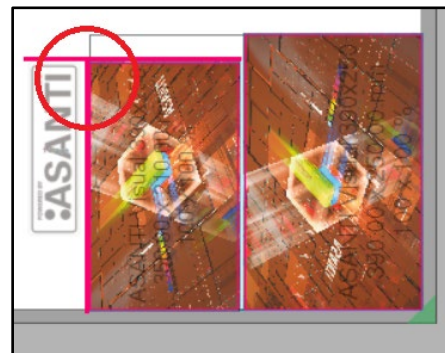
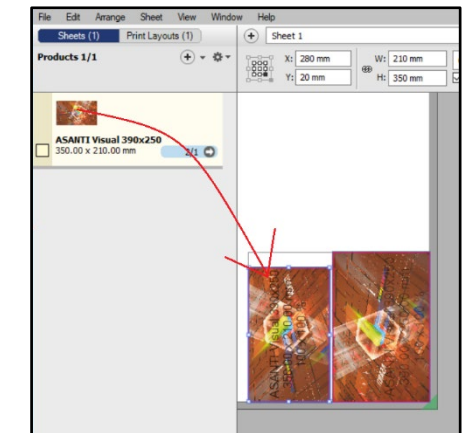
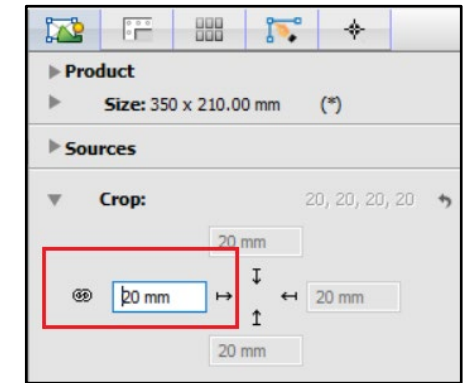
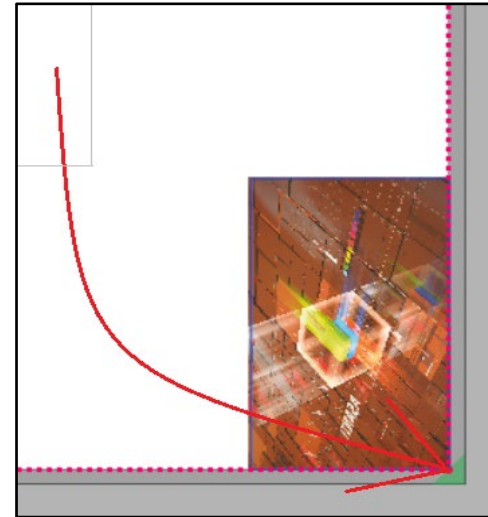


- In the Rotate/Mirror group click the "Mirror Horizontally" icon and select 90° from the "Rotate" drop down list.



4. Positioning multiple products on the Print Layout

1. Select the frame and drag it towards the right bottom corner.
2. Double click the product in the Products pane to open the Product Editor. Change all Crop values to 20 mm and click Apply.
3. Drag the cropped product from the Products pane to the Sheet. Press SPACE once to rotate the product 90 degrees Counter Clockwise and drop it. It is placed next to the first one with 10 mm distance between the frames. Only this one is cropped, the first one remains untouched.
4. Click "+" to add another product. Browse for "Asanti-sticker-01.pdf" and click Open.
5. Drag the product to the Sheet, hold and rotate it. Press SHIFT and drop it next to the previous product when solid magenta lines appear on top and right side. This aligns the tops and keeps the 10 mm distance.
6. Drag the same product again but press SHIFT+SPACE to rotate the product 90 degrees Clockwise. Press SHIFT+ALT (to ignore the product margins) and drop it when solid cyan lines appear at the top and right side.



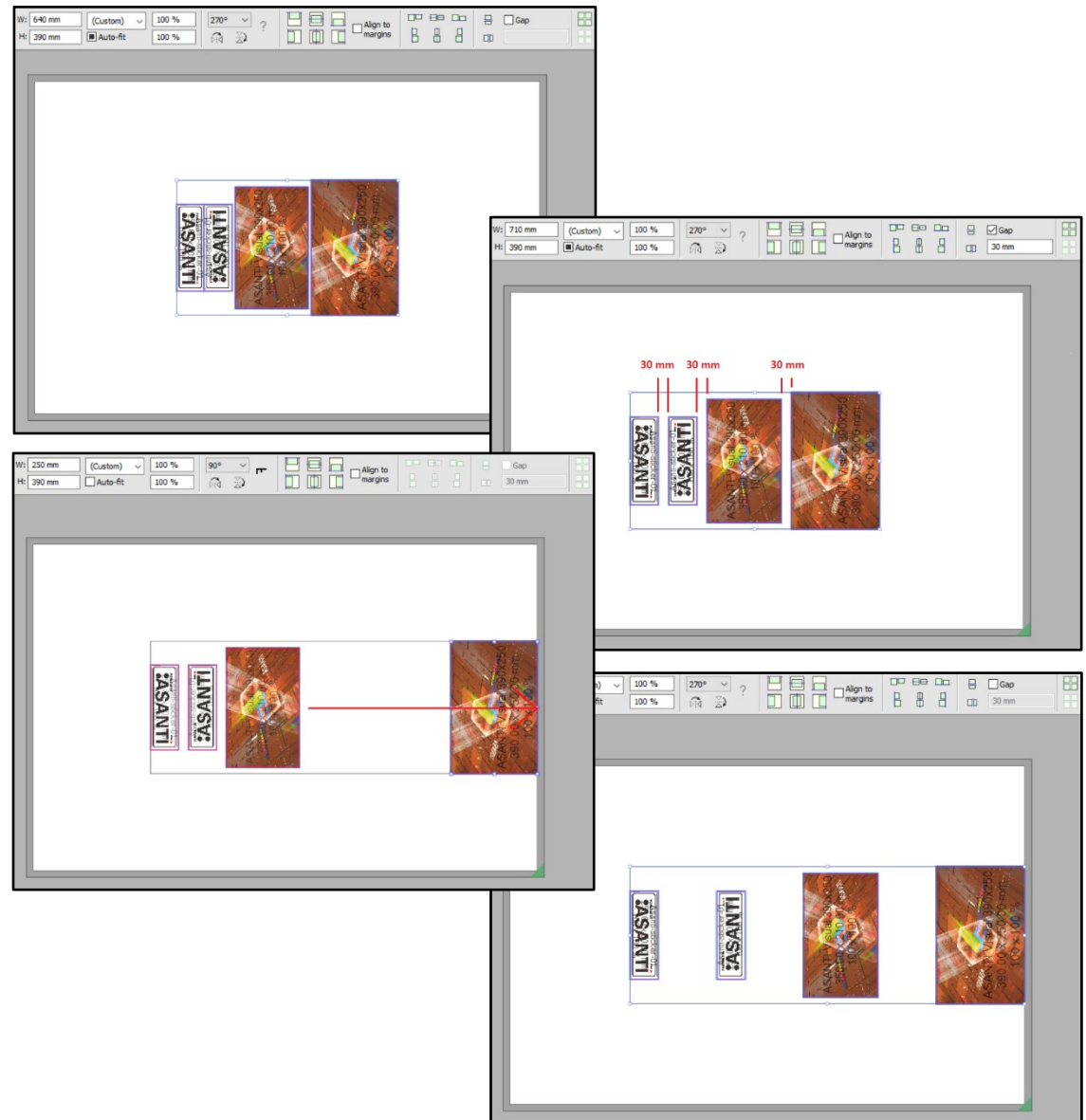
7. Select CTRL+A and click the Group button to group all products (1).



8. Click the Horizontal and Vertical center buttons (2).

9. Click the Ungroup button (3) and then click the Align Vertical Centers button (4).

10. Enable the Gap option (5) and enter 30 mm as value (6). Click now on the Distribute items horizontally button (7) to create a gap of 30 mm between the product frames.



11. Click in the white area outside the selected frames to deselect all products.

12. Select the first frame and drag it to the right margin.

13. Press CTRL+A and disable the Gap option. Click now the Distribute items horizontally button to distribute gaps evenly.

14. Submit the job.