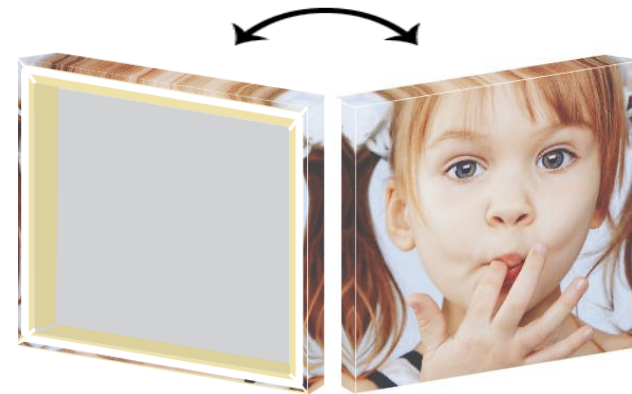


This tutorial demonstrates how to create a canvas wrap. The printed material is typically mounted on a (wooden) frame. Download the Asanti Sample Files via the Asanti Client (Help > Asanti Online > Download Sample Files).

The dimensions of the canvas frame in this tutorial are:

- Canvas size: 700x700mm
- Canvas thickness: 40mm
- Overlap on back to fasten the material on the canvas frame: 20mm



Other flavors of canvas wrapping are also covered in this tutorial:



Mirror Wrap



White Wrap



Black Wrap



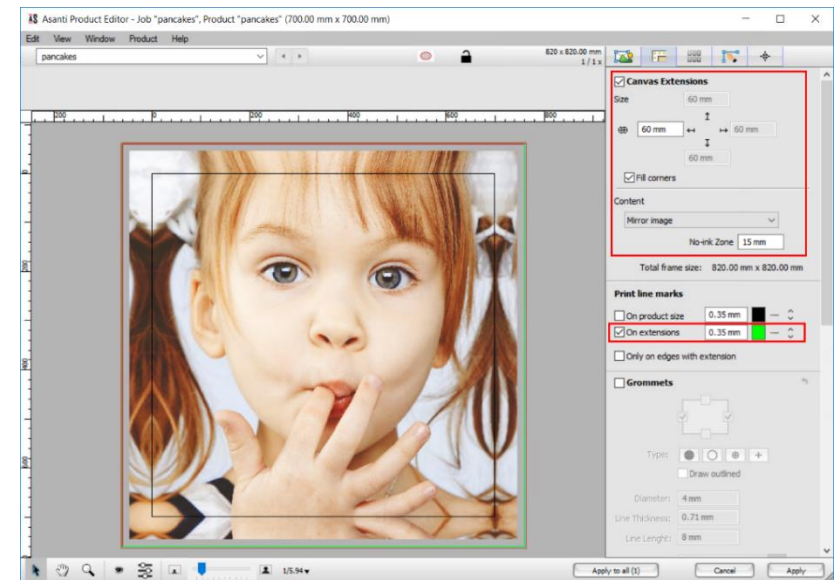
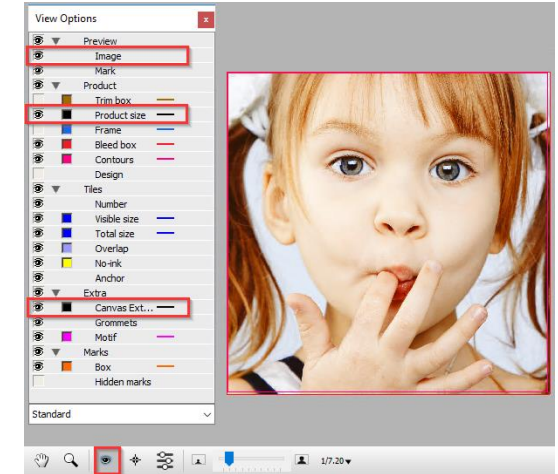
Custom Color Wrap



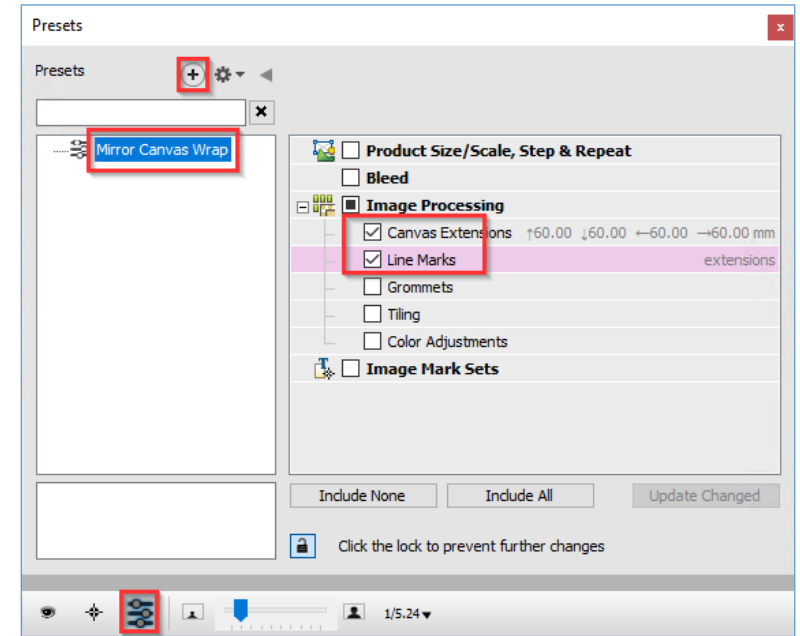
Gallery Wrap

## 1. Mirror wrap

1. File > New Wide Format Job.
2. Select a Printer and set the size to 900 x 900mm.
3. Select the Finishing inspector, set cutter to Zünd and Finishing Margins to “iCut Corner Marks, between 10”.
4. Add the “pancakes.pdf” file and double-click it to open it in the Product Editor.
5. Open the View options and make sure the following settings are enabled:
  - Preview – Image
  - Product – Product Size
  - Extra – Canvas Extension
6. Select the Canvas Extensions inspector.
7. Enable Canvas Extensions and set Size to 60 mm.
  - About 40 mm of material is required to mount the print over the wooden frame.
  - An additional 20 mm is required to stitch the canvas on the backside of the frame.
8. Enable “Fill corners” and set Content to “Mirror image”.
9. Set “No-ink Zone” to 15 mm.
  - As mentioned above we need 20 mm material to stitch the canvas on the backside of the wooden frame, only 5 mm of image is required so a no-ink zone of 15 mm can be defined.
10. Enable Print Line Marks – “On extensions” to draw a line on the outer edge of the flaps. This line will be a cutter guide to manually cut the canvas.
11. Click the black square and change the color of the line mark to a Green color.

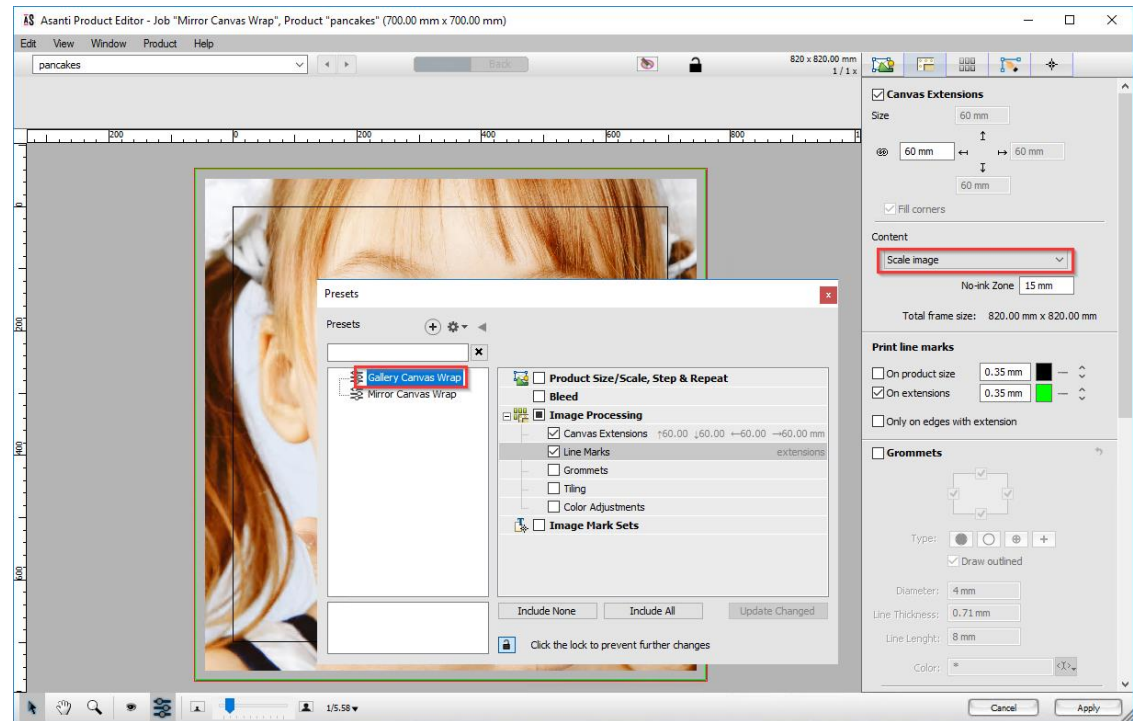


12. Click the Presets button and select the + button to create a new Preset.
13. Name the Preset “Mirror Canvas Wrap”.
  - This Preset can be used for future Canvas wraps jobs.
14. Enable under Image Processing the Canvas Extensions and Line Marks settings.
15. Click the “Lock” icon to preserve the Preset.
16. Close the Presets window.
17. Click Apply, to apply the Product Editor adjustments to your image. This will also close the Product Editor.
18. Select your image in the Product List and place it on the Sheet.
19. Submit Job > name it “Mirror Canvas Wrap” > select “Make and hold” for Print Files and “Make and send to cutter” for Cut Files.



## 2. Gallery wrap

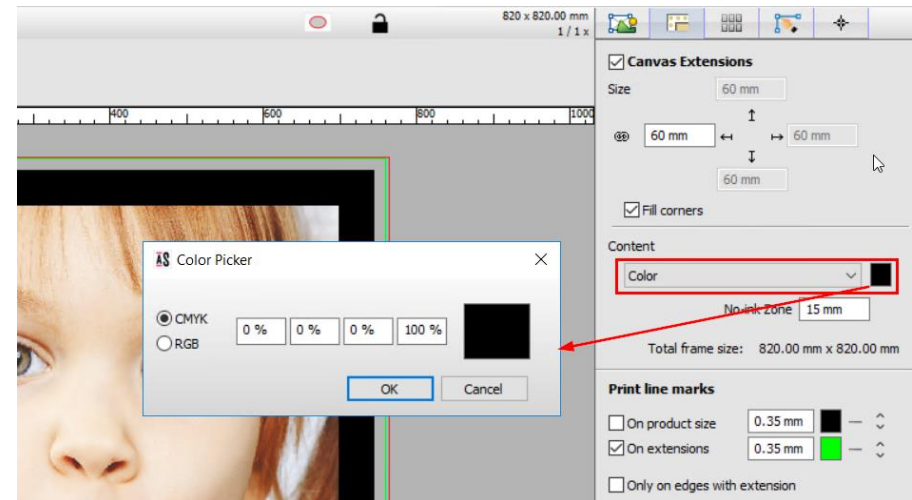
1. Context-click the “Mirror canvas wrap” job and select “Duplicate Job”.
2. Open the image in the Product Editor.
3. Select the Canvas Extensions Inspector.
4. Change Content to “Scale Image” to create a Gallery Wrap Canvas.
5. Create also again a Preset called “Gallery Canvas Wrap”.
6. Close the Presets, Apply the Product Editor settings.
7. Submit job > name it “Gallery Canvas Wrap” > select “Make and Hold” for Print Files and “Make and send to cutter” for Cut Files.



Gallery Wrap

### 3. Black or White wrap

1. File > New Wide Format Job.
2. Select a Printer and set size to 900 x 900mm.
3. Select the Finishing inspector, set cutter to Zünd and Finishing margins to “iCut Corner Marks, between 10”.
4. Add the “pancakes.pdf” file, open the Presets dialog and double-click the “Gallery Canvas Wrap” or the “Mirror Canvas Wrap” to apply the Canvas Extensions settings we used earlier to our image.
5. Close the Presets dialog.
6. Open the image in the Product Editor, select the Canvas Extensions Inspector and change Content to “Color”.
7. Click the white square to open the “Color Picker”.
8. Change the color of the Canvas Extension to Black to create a black wrap.
  - To make a white wrap: select “No ink” instead of Color to leave the canvas extension empty.
9. Click “Apply” to apply the Product Editor adjustments, place the image on your Sheet.



10. Submit Job > name it “White (or Black) Wrap” > select “Make and hold” for Print Files and “Make and send to cutter” for Cut Files.



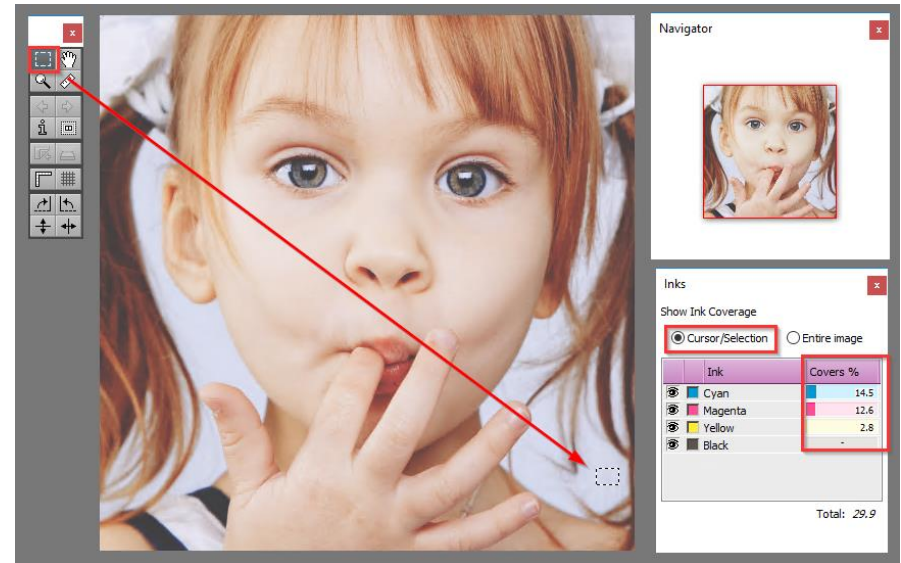
Black Wrap



White Wrap

#### 4. Custom color wrap

1. Duplicate the “White (or Black) Wrap” job.
2. Context click the pancakes image and select “Edit with Preview” to open the image in the Raster Preview.
3. In the Tools palette select the “Marquee Tool”.
4. In the Inks palette select the “Cursor/Selection” option.
5. Position your mouse cursor in the light (blue) background of the image.
6. Read out the CMYK ink values which define this background.
  - The same color values (Cyan 14.5%, Magenta 12.6% and Yellow 2.8%) will be used as a color canvas wrap to match the canvas wrap with the image background as close as possible.
7. Close the Preview.



8. Open the image in the Product Editor and select the Canvas Extensions Inspector.
9. Set Content to Color and set the color to 14.5-12.6-2.8-0.
10. Click “Apply” to apply the Product Editor settings.
11. Submit Job > name it “Custom Color Wrap” > select “Make and hold” for Print Files and “Make and send to cutter” for Cut Files”.

