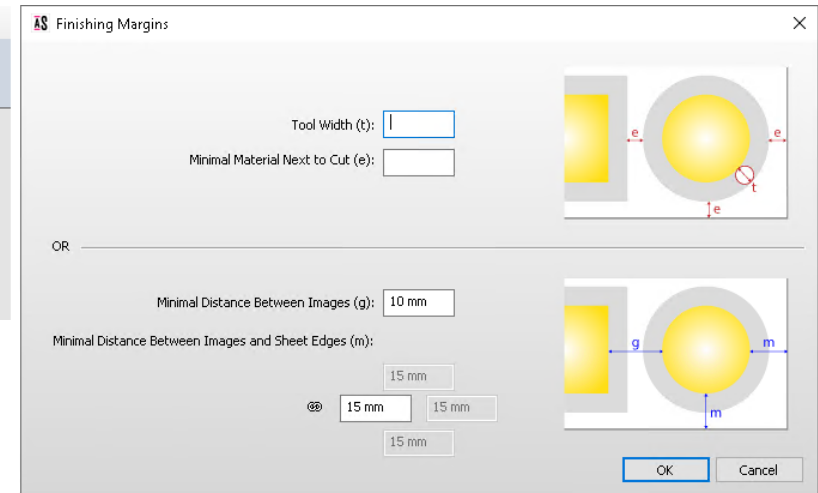
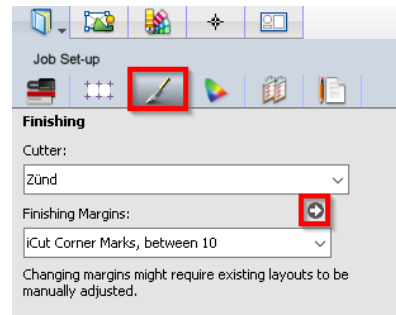


This tutorial demonstrates how to output a job with iCut marks.

Download the Asanti Sample Files via the Asanti Client (Help > Asanti Online > Download Sample Files).

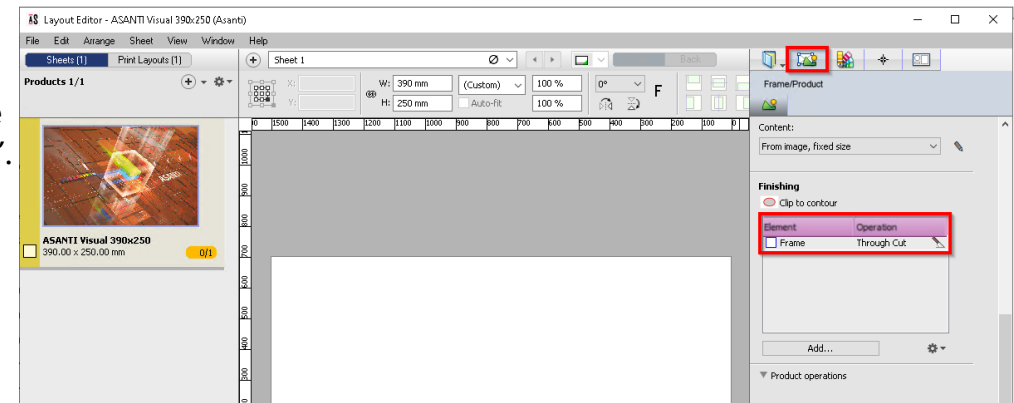
1. Create a new job

1. File menu > New Wide Format Job.
2. Select a printer.
3. Set sheet size to e.g. 1500x700 mm.
4. Select the Job Set-up > Finishing inspector.
5. Select Cutter “Zünd”.
6. Select Finishing margins “iCut Corner Marks, between 10”.
7. Click the arrow next to the “Finishing Margins” title.
 - Minimal Distance Between Images is set to 10 mm. This is required to preserve bleed.
 - Minimal Distance Between Images and Sheet Edges is set to 15 mm. This is required to preserve bleed and space for the iCut marks.
8. Click OK.

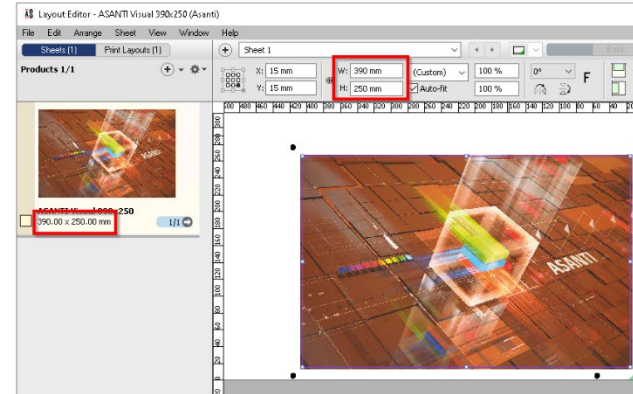


2. Place images

1. In the Products panel click “+” and browse for “ASANTI Visual 390x250.pdf”, click Open.
2. Select the product; select the Frame/Product inspector. In the Finishing settings, the frame is set to Operation “Through Cut”.



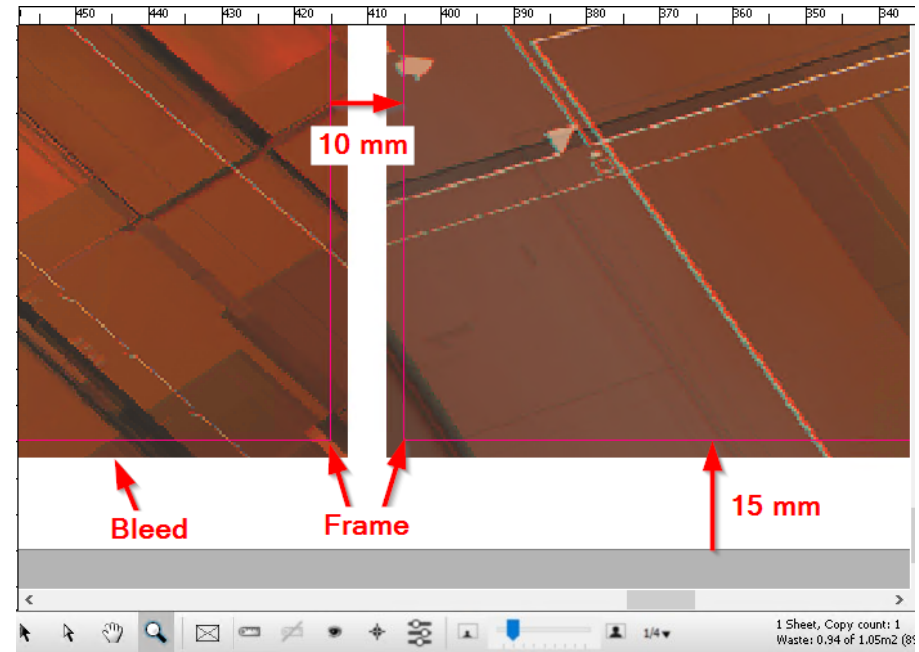
3. Drag the product on the sheet. In the Positioning toolbar, the size of the frame is set to the trimbox of the file: 390x250mm.



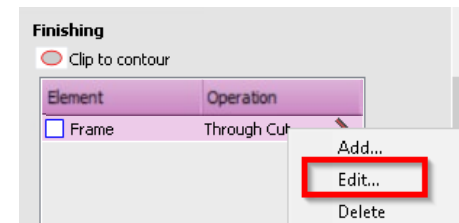
4. Drag the file a second time on the sheet.
5. Zoom in using the zoom tool from the Print Layout toolbar.



6. 15mm distance is kept between frame and sheet edge. This is defined by the Finishing Margins. The iCut marks are placed inside this margin.
7. The product is placed next to the original one with 10 mm in between the frames. The bleed outside the frames is preserved.

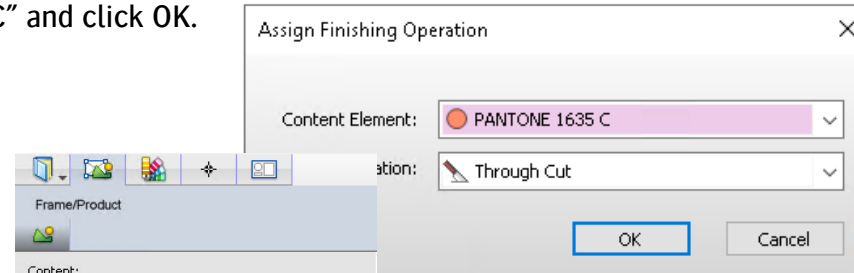


8. Add another file to the Products panel: Asanti Box_Pantones.pdf.
9. Select the new product and select the Frame/Product inspector. In the Finishing settings, the frame is set to Operation "Through Cut".

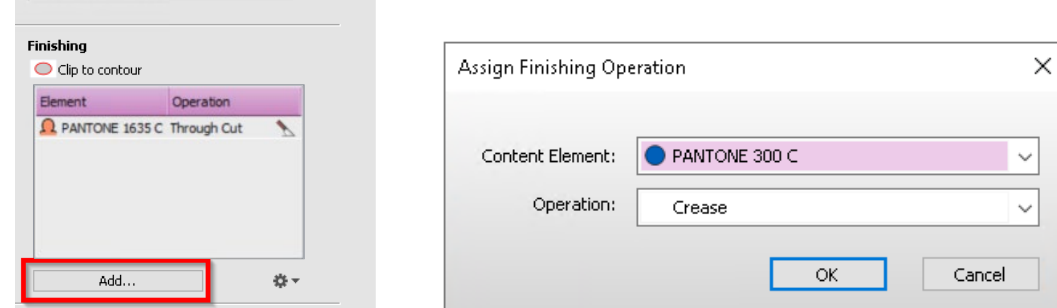


10. Context click element "Frame">Edit...

11. Change Content Element to “PANTONE 1635 C” and click OK.

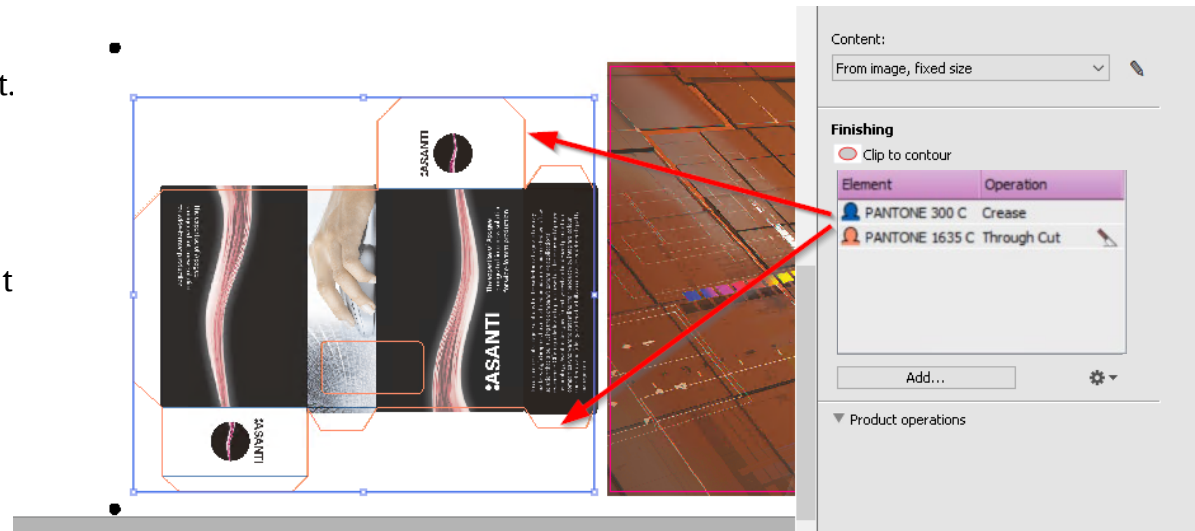


12. Click Add...
Select Content Element “PANTONE 300 C”,
Operation “Crease”, click OK.



In Asanti, vectors from the input documents can be assigned to an finishing operation if these vectors are drawn in a spot color.

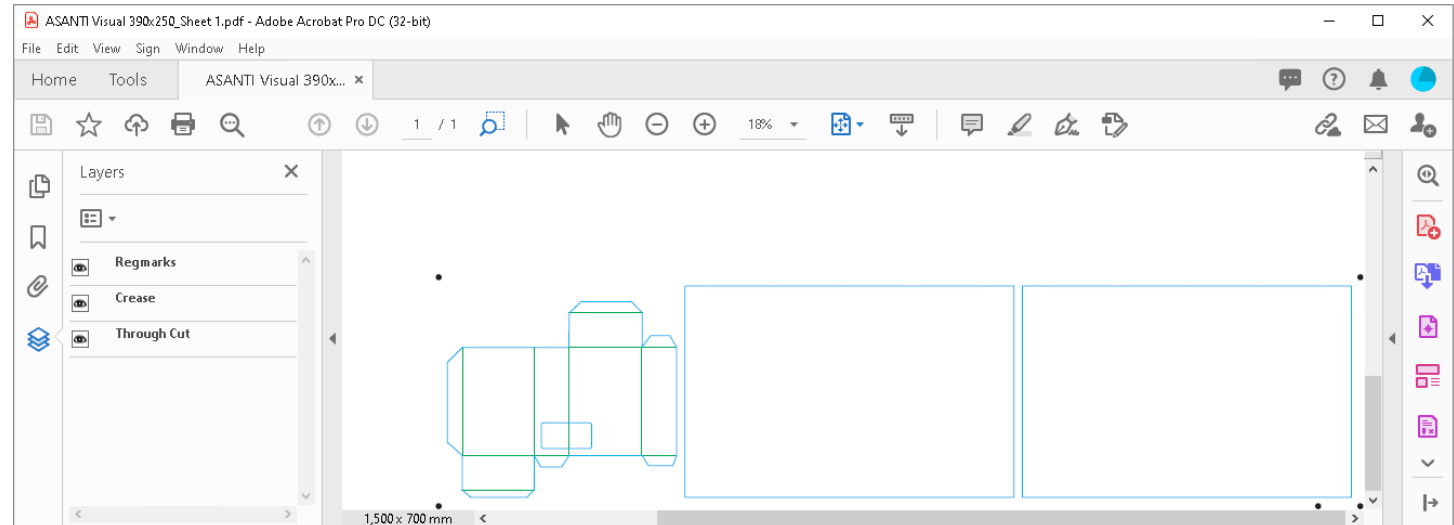
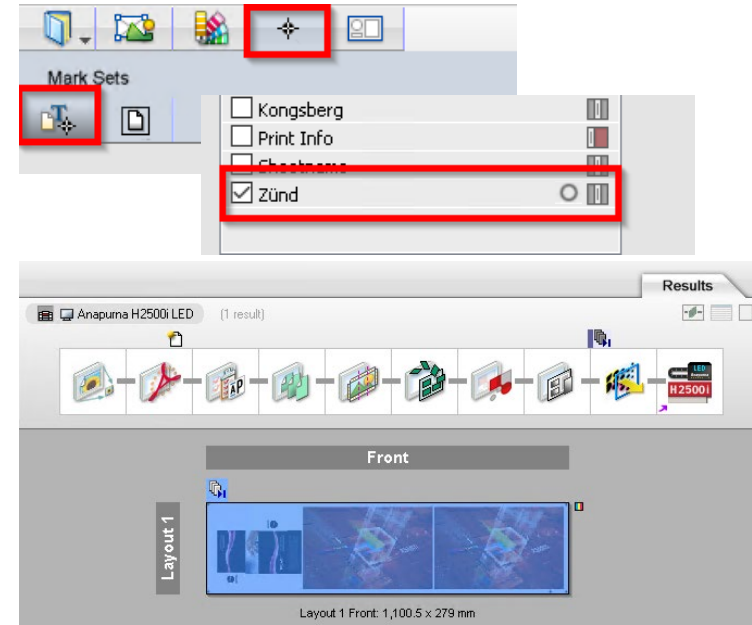
- 13. Drag “Asanti Box_Pantones.pdf” on the sheet.
- 14. Select “Asanti Box_Pantones.pdf” on the sheet.
- 15. In the Finishing settings, select Element PANTONE 300 C. This shows up the “Crease” operation on the placed product in blue.
- 16. Select Element PANTONE 1635 C. This shows up the “Through Cut” operation on t places product in orange.



17. Select the Marks Set inspector. The Zünd Sheet Marks Set is automatically selected because we selected the Zünd Cutter device. This Mark Set places iCut marks outside the corners of the Product block (all products on the sheet).

3. Submit job

1. Submit Job > Change the job name > “Make and hold” for Print Files and “Make and send to cutter” for Cut Files.
2. Click “Submit”.
3. In the job list, context click on the new job and choose ‘Reveal Cut File for Job’ to open the cut file. By default this file is written to \\your Asanti Server\FinishingRoot\Zünd\.
4. The cut file contains a layer per Operation (Through Cut and Crease) and one for the iCut marks (Regmarks).



For more detailed information on this cutter or to find out which cutters are supported with Asanti => [Asanti supported cutters](#)