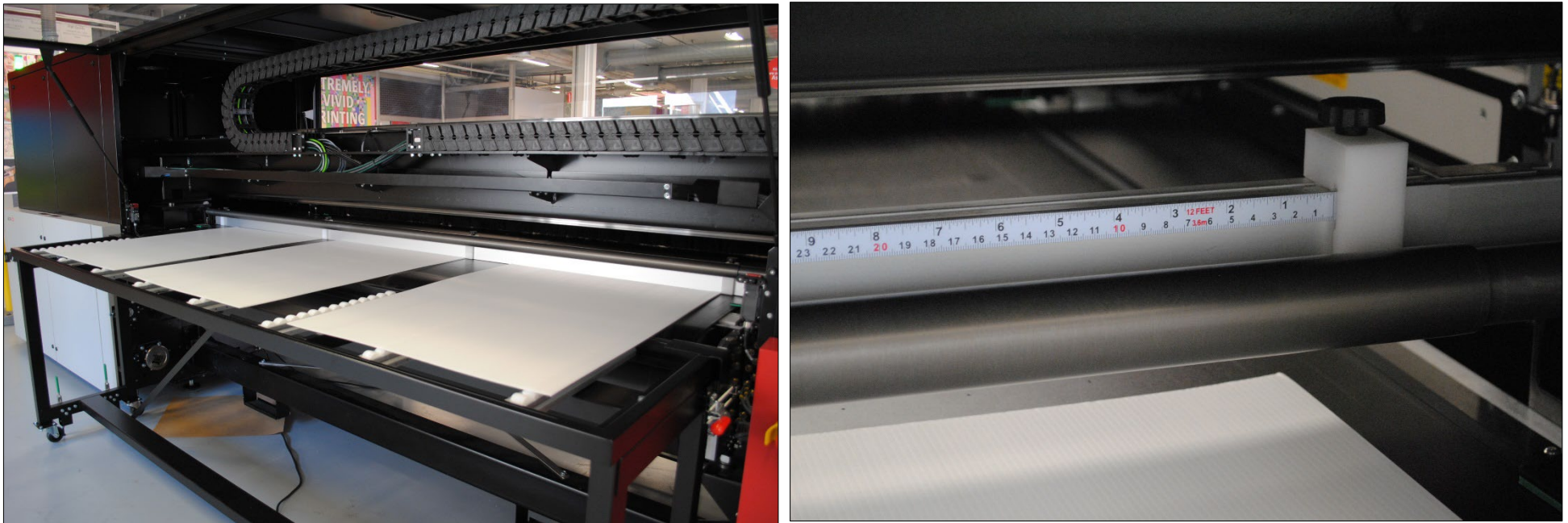


This tutorial demonstrates how to work with multiple sheets to a Jeti Tauro using Alignment Pin Sets.

This tutorial uses sample files: download the Asanti Sample Files via the Asanti Client (Help > Asanti Online > Download Sample Files).

The Jeti Tauro allows the user to place multiple sheets\boards next to each other on the printer bed to be printed in the same print run. The Tauro engine has moveable alignment pins which slide over the setbar to be fixed at desired positions.

Each sheet will result in its own separate cut file. Sheets which were printed multiple times will only result in 1 cut file.



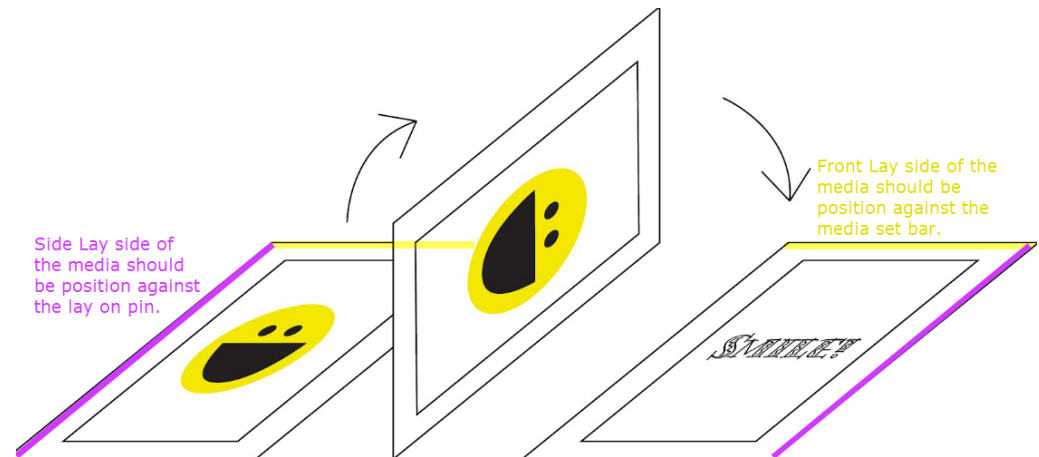
The input side of the Tauro with 3 sheets aligned to the media set bar and placed against 3 alignment pins.

1. Tauro Manual Pin Set – Front\Back on a large board

An Alignment Pin Set for manual placing of up to 3 sheets or fewer large boards is available for [download](#).

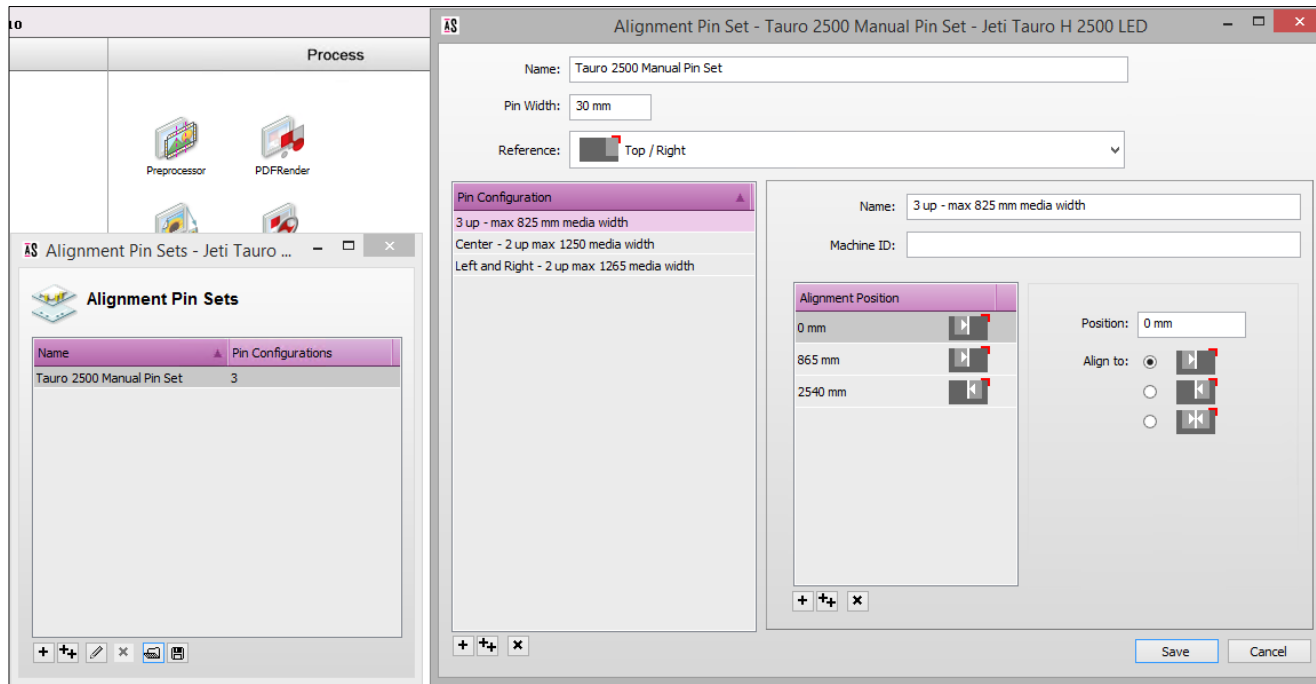
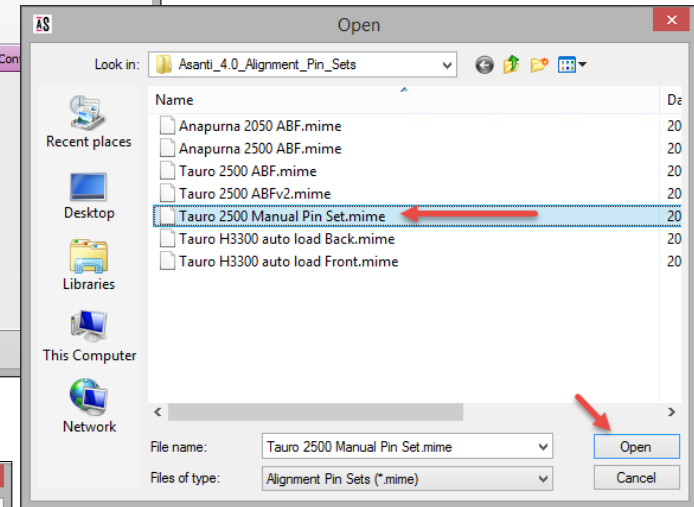
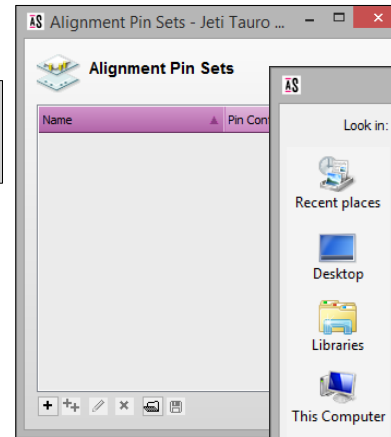
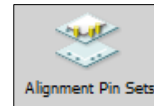
This Alignment Pin Set contains 3 pin configurations.

- 3 up - max 825 mm media width.
 - Use this pin set to print 3 sheets simultaneously.
- Center - 2 up max 1250 mm media width.
 - Use this pin set to print sheets or boards. If the pin is positioned centered in combination with smaller sheets sizes Tauro will print faster in combination with the parameters turn shuttle outside of image or outside of media.
 - Media loading can be optimized because the sheets can be pushed against the centralized alignment pin and the media set bar.
- Left and Right - 2 up max 1265 mm media width.
 - This pin set can be used to print 2 sheets but also to print front back with correct registration. If smaller sheets are used in combination with this Pin Set the printing shuttle will always move over the complete table and printing speed will not decrease when printing smaller sheets.
 - To achieve correct front back registration, it is important that the front lay side of the media is positioned against the media set bar and that the side lay side is placed against the alignment pin. This is also known as work and turn.



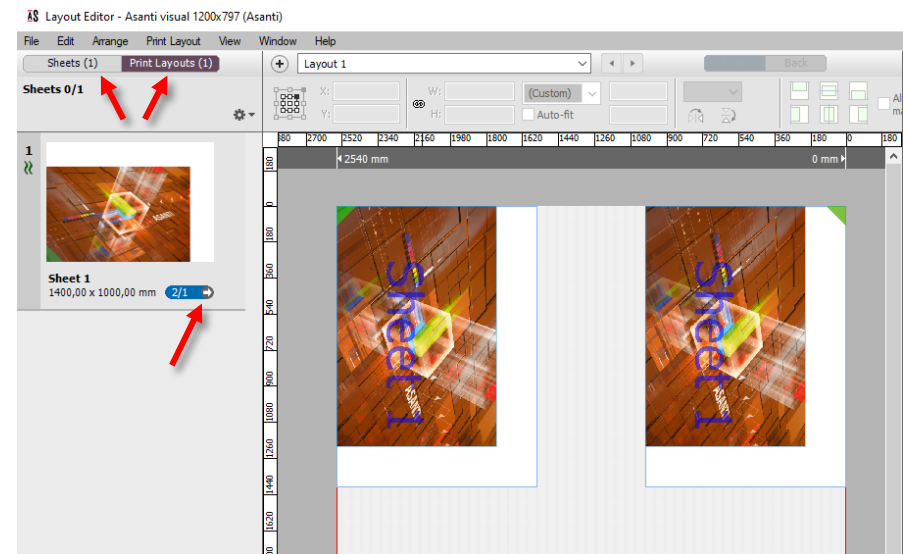
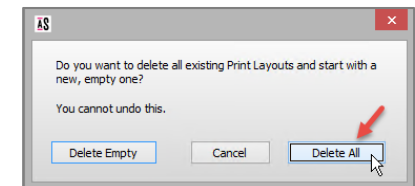
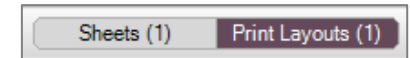
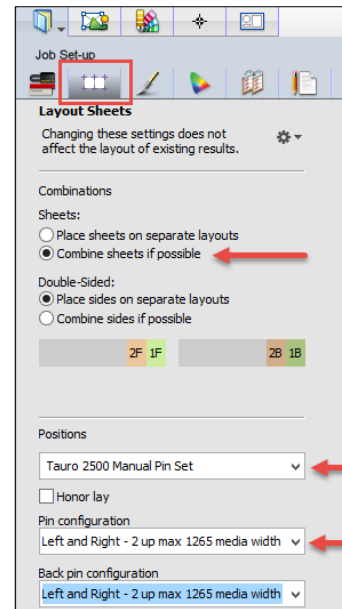
2. Download/ install the Tauro Manual Pin Set

1. [Download](#) the Asanti Alignment Pin Sets.zip file.
2. Extract the Asanti Alignment Pin Sets.
3. Select your Tauro in the System Overview and open the Alignment Pin Sets resource.
4. Click the Import button and browse to the extracted Tauro 2500 Manual Pin Set (.mime file).
5. The Tauro Manual Pin Set resource contains 3 Pin Configurations.



3. Using the Tauro Manual Pin Set for manual multi sheet printing – Left and Right of bed

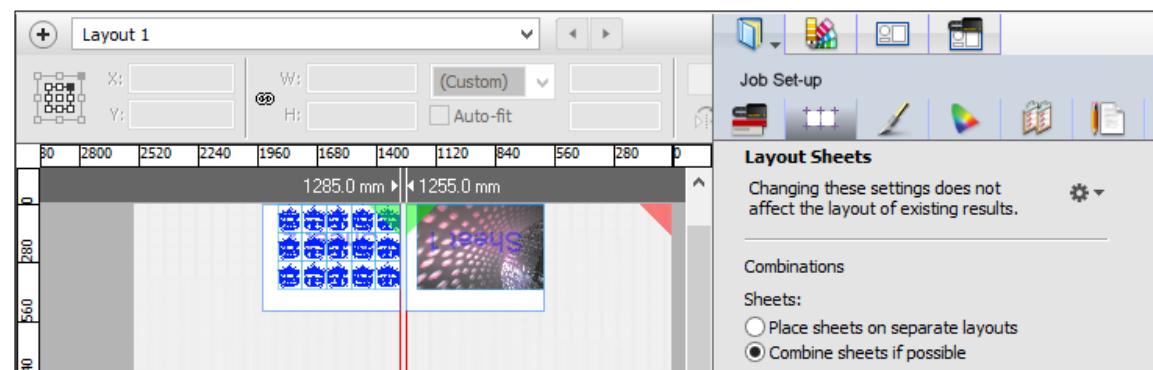
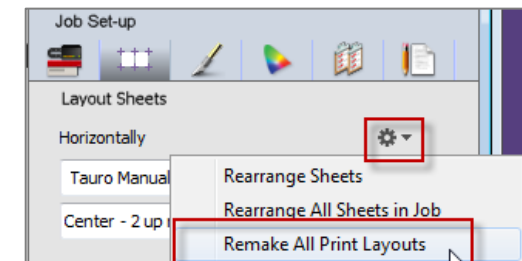
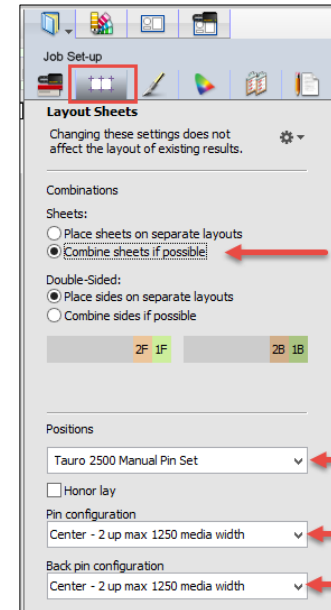
1. Start a new job by selecting File > New Wide Format job.
2. Select the Tauro and name the job “Tauro Manual Pin Set-1”.
3. Set the sheet size to 1400 x 1000 mm.
4. Add the Asanti visual 1200x797.jpg file from the Sample Files.
5. Place the product on the sheet.
6. Go to Print Layouts View by clicking the right button “Print Layouts” which is positioned above the Product pane at the left.
7. The sheet is placed at 0 degrees rotation on the bed.
8. In the Layout Sheets Inspector: Combinations: Select “Combine sheets if possible”. Under Positions: set the Tauro Manual Pin Set and select the Left and Right – 2up Pin Configuration.
9. From the menu Print Layouts>Delete Layouts...
10. Select Delete all Layouts.
11. Drag the sheet on the bed – Press the **SPACE BAR** once and release. Do this 2 times. There are now 2 sheet on 1 Layout.
12. Submit the job and select “Make and hold”.



4. Using the Tauro Manual Pin Set - Pin configuration with center pin

For faster 2 up printing on smaller sheets the Pin configuration with the middle pin can be used.

1. File > New Wide Format job: name it "Tauro Manual Pin Set-2".
2. Select the Tauro printer and set the sheet size to 650 x 500 mm.
3. Add the Sample Files: Disco_ball_600x400.pdf and CHIMAY BLEU.jpg.
4. Place the Disco_ball file on Sheet 1 and fill Sheet 2 with the CHIMAY BLEU file: context click the product on the Sheet > Duplicate Frame on sheet and select Fill sheet.
5. Go to Print Layouts, you will see two Layouts.
6. In the Layout Sheets Inspector: Combinations: select "Combine Sheets if possible". Under Positions: select the Tauro Manual Pin Set and the "Center - 2 up max 1250mm" Pin configuration.
7. The present Layouts are not automatically reorganised therefore select from the cogwheel: Remake All Print Layouts.
8. Both sheets are now aligned left and right of the middle pin.
9. Submit the job and select Make and hold.

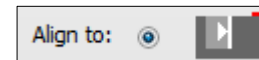
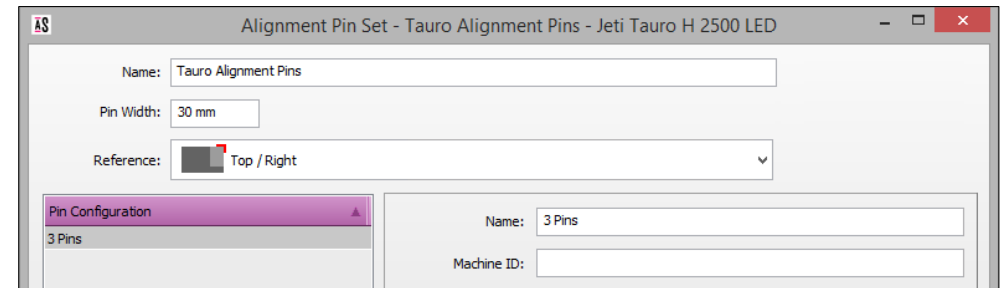
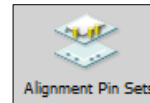


5. Creating and using a custom alignment Pin Set on a Jeti Tauro – 3 sheets

The Agfa Jeti Tauro print engine has a media set bar which includes several alignment pins which can be set at a custom distance from the 0-point.

Only Single row is supported for the vertical alignment; you can only place multiple boards horizontally next to each other on the belt. The boards are loaded at the input side.

1. In System Overview, select the Tauro and open the Alignment Pins Sets.
2. Click the + button to create a new Alignment Pin Set.
3. Name it “Tauro Alignment Pins”.
4. Name the New Pin Configuration “3 Pins”.
5. In the right upper corner set the pin width to 30 mm.
6. Reference should be Top/Right for the Tauro.
7. With the + button: Create 3 pins with the sheet on the left side of the pin (see icon) at 0 mm, 740 mm and 1480 mm.



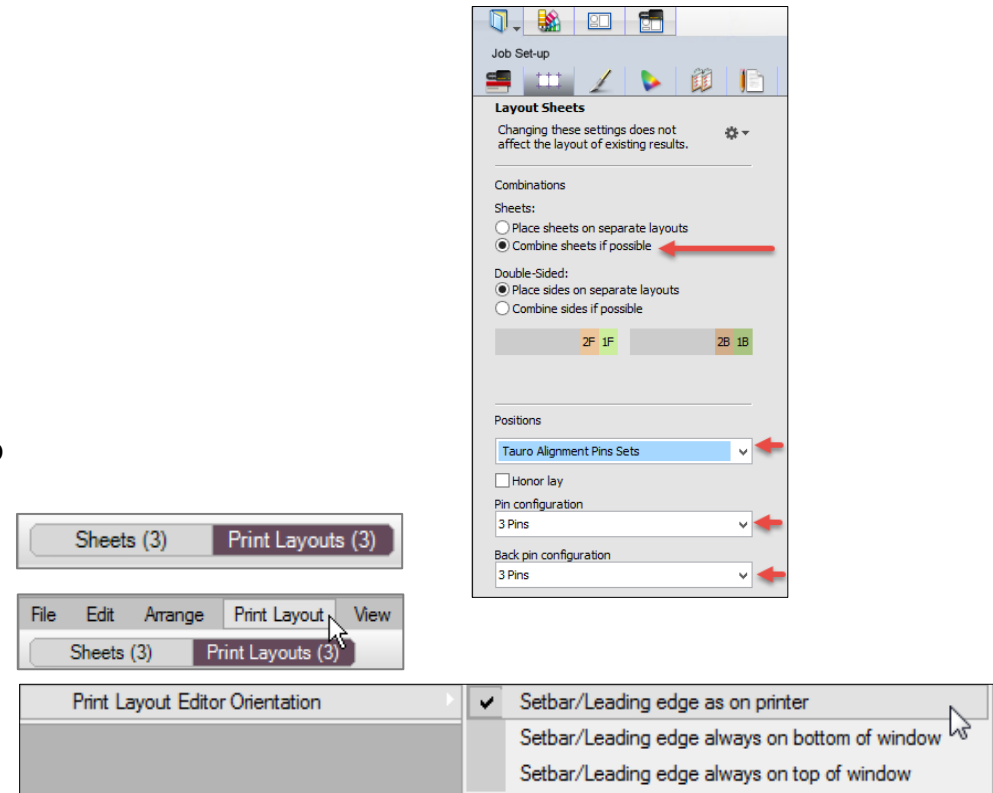
Alignment Position	
0 mm	
740 mm	
1480 mm	

The directions left and right are to be seen in the media feed direction (the media moves away from you when printing). The icons in the editor window depict the 0:0 side-lay edge by a red hook. The pin is the white vertical stripe.

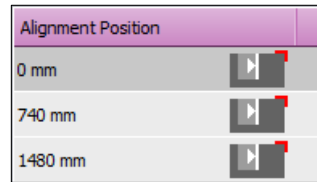
8. Save the Pin Set.
9. Close the Alignment Pin Sets window.

10. In the Jobs Window: File>New Wide Format job for the Jeti Tauro.
11. In the Finishing Inspector: select Zünd as Cutter and set “icut corner marks, between 5” as Margins.
12. Set the Sheet size to 500 x 700 mm.
13. Add the files “Disco_ball_600x400.jpg”, “Miller Lite Logo.jpg” and “Pancakes.pdf” to the Product pane.
14. Scale the Miller and Pancakes files by 50%. Place the products on the sheet, use SPACE bar for the Disco_ball file; to get 3 sheets.
15. In the Layout Sheets Inspector Inspector: Combinations: select “Combine Sheets if possible”. Under Positions: Select the Tauro Alignment Pin Sets and set “3 Pins”.
16. Go to the Print Layout View by clicking the Print Layouts tab.

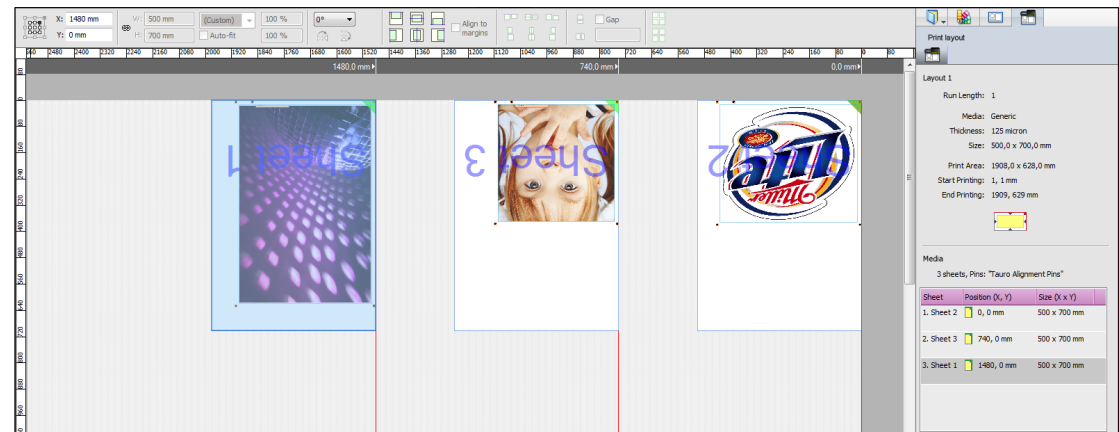
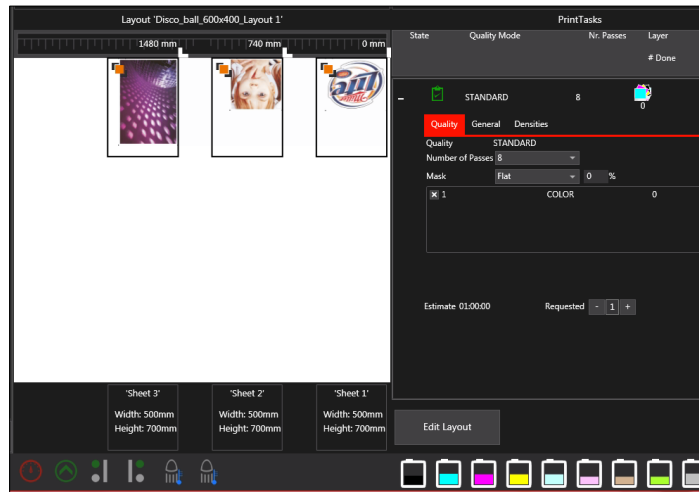
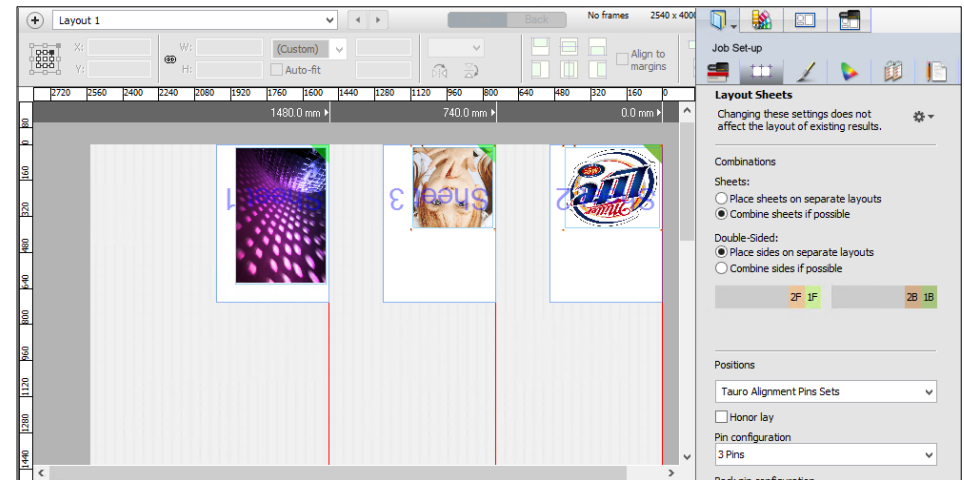
17. From the Print Layout menu > Delete Print Layouts. Click “Delete All”.
18. View> Print Layout Editor Orientation>Setbar\Leading edge as on printer.



19. Drag all sheets on the Layout.
20. The sheets are now alignment following the “3 Pins” Alignment Set configuration. With the setbar at the top you see the view from the back of the engine, just like the icons showed during the Pin Set creation.



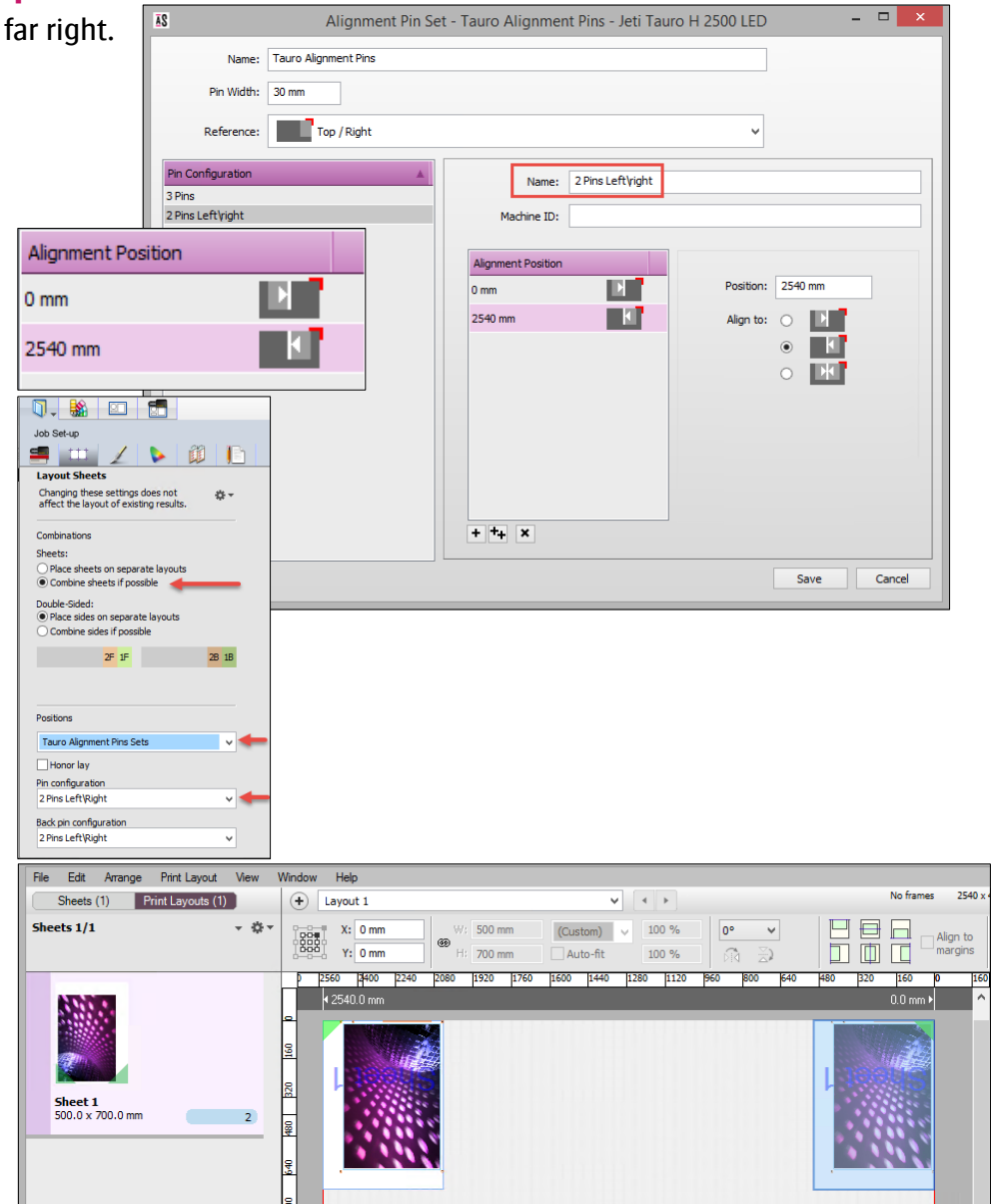
21. Select the Print Layout Inspector. It shows the Run Length, media and more information about the Layout.
22. Submit the job and look at the result on Tauro.



6. Custom alignment Pin configuration on the Jeti Tauro - 2 pins

To print large boards 2 pins can be used: one on the far left and one on the far right.

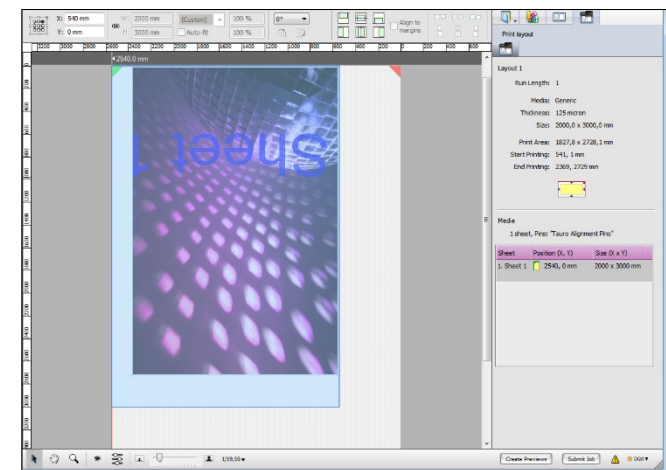
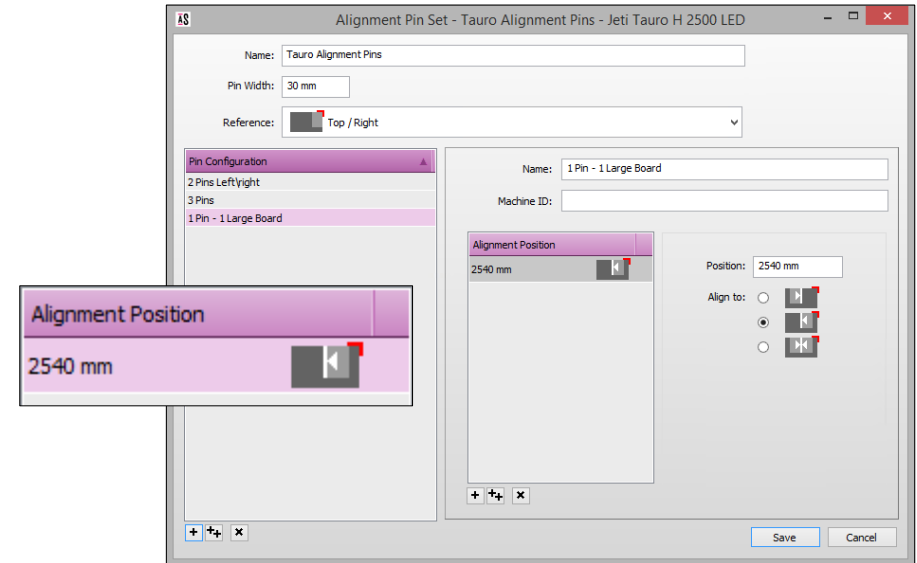
1. In the System Overview, open the Alignment Pins Resource of the Jeti Tauro.
2. In the "Tauro Alignment Pins" Set create a new Pin Configuration: "2 Pins Left\Right".
3. Set a pin with the sheet at the left side of the pin at 0 mm and set a pin with the sheet at the right side of the pin at 2540 mm. (The Jeti Tauro is 2540 mm wide) (Back view).
4. Save the new Pin Set Configuration.
5. In Jobs Window: File>New Wide Format job for Jeti Tauro.
6. Set the Sheet size to 500 mm W and 700 mm H.
7. In the Finishing Inspector: select the Zünd as Cutter and set "icut corner marks, between 5" as Margins.
8. Leave Bleed to 2,4 mm.
9. Add the file "Disco_ball_600x400.jpg".
10. Drag the file to the sheet. Use the SPACE bar to rotate.
11. Go to the Layout Pane by clicking the "Print Layouts" tab.
12. In the Job Set-up > Layout Sheets Inspector: Combinations: select "Combine Sheets if possible". Under Positions: select the "2 Pins Left\Right" Pin Configuration.
13. The already placed sheet was aligned to the 0 mm Pin.
14. Context-click the sheet on the Layout and select "Duplicate Sheet on Layout".
15. Create 1 additional copy.
16. The second sheet was positioned automatically at the other pin of the configuration.
17. Submit the job and look at the result on Tauro.
18. Only one cut file is exported to the Finishing Root.



7. Printing on 1 large media on the Jeti Tauro – 1 Pin

For very large Boards it is easier on the Tauro to align the media at the far left corner (as seen from the back of the engine where the media is loaded). For this we will create a Pin Set with only 1 Pin at the furthest corner of the setbar.

1. In System Overview, open the Alignment Pins Resource of the Jeti Tauro.
2. In the “Tauro Alignment Pins” Set create a new Pin Configuration: “1 Pin - 1 Large Board”.
3. Position the sheet on the right of the pin at 2540 mm. (seen from the back of the engine)
4. Save the Pin Set Configuration.
5. In the Jobs Window: File>New Wide Format job for Tauro.
6. Set the Sheet size to 2000 W x3000 H.
7. In the Finishing Inspector select the Zünd as Cutter and set “icut corner marks, between 5” as Margins.
8. Add the file “Disco_ball_600x400.jpg”.
9. Drag the product to the sheet, use the SPACE bar to rotate and scale the product 450%.
10. Go to the Print Layouts mode by clicking the Print Layouts tab.
11. In the Layout Sheets Inspector: “Combine Sheets if possible” and select the “1 Pin - 1 Large Board” Pin configuration.
12. Context click the sheet on the Layout > Rearrange Sheet.
13. The sheet is now aligned at the furthest corner (rear view\loading side), so you can push the media to the pin.
14. Submit the job and look at the result on Tauro.



When the sheet does not place itself automatically, this might mean that the alignment of the pin is incorrect. This validation still needs to be implemented.

Instead of rearranging each sheet you can also select Print Layout > Rearrange all Sheets in job from the Print Layout menu.

8. Known issues and limitations

- APR-68570: Alignment Pin Set Resource should not be shared among all Large Format Printers. Most have different sizes and some have a different 0-point.
- APR-68921: When you change the Print Layout ganging rule for the current job, the initially placed sheet will already have been positioned according to the initial rule. You will always need to apply Print Layout>Rearrange All Sheets in Job. – This behavior will not be changed.